

# **NORTH YORKSHIRE OPEN STUDIOS 2025**

Visit over 200 selected Artists  
and Makers in their studios

**SUMMER**  
**7-8 & 14-15 JUNE 2025**  
**10AM - 5PM**

**WINTER**  
**1-2 NOVEMBER 2025**  
**11AM - 4PM**



[info@nyos.org.uk](mailto:info@nyos.org.uk)  
[www.nyos.org.uk](http://www.nyos.org.uk)



# WELCOME

2025 is looking like a fantastic year for the art of North Yorkshire; a huge range of artwork, created by over 200 artists from coast to dales, will be celebrated in a series of events across the region and throughout the year for all to enjoy.

Artists will be opening their studio doors in June for two weekends as well as for a winter weekend in November. There will also be a series of exhibitions throughout the year when you will be able to see the work of many of our artists.

Make a note of the dates and venues to make sure you make the most of the 2025 North Yorkshire Open Studios (NYOS) events.

North Yorkshire Open Studios is a not-for-profit community that works to support the many painters, sculptors, print-makers, jewellers, ceramicists, photographers and creatives who live and work in North Yorkshire.

---

## 2025 Exhibitions & Events

### **March 4th -22nd** **Rural Arts, Thirsk** **'The North'**

Exhibition of selected artists

### **March 21st -10th May** **Craven Arts, Skipton** **NYOS Spring Exhibition**

Exhibition showcasing the work of all NYOS artists

### **June 7th -8th** **June 14th -15th** **Summer Open Studios**

All NYOS artists will be opening their studios over these two weekends. This is the main annual event enabling artists and makers to open their studios, meet, promote and sell their work direct to the public

### **July 12th - 20th** **Ampleforth Abbey**

Exhibition of a range of NYOS artists

### **November 1st-2nd** **Winter Open Studios**



Participating NYOS artists will be opening their studios this weekend. An additional winter event enabling artists and makers to open their studios, meet, promote and sell their work direct to the public.

Look for the snowflake icon on each artist's entry.



**WELCOME****FRIENDS****THE DALES****CENTRAL****MOORS AND COAST****INDEX OF ARTISTS BY MEDIUM****STUDIOS LOCATION MAP****INSIDE COVER****4****5****21****48****76****BACK INSERT****Steering Group**

Garth Bayley  
Mark Butler  
Damian Clements  
Jo Garlick  
Robin Grover-Jacques  
Liz Harvey  
Carolyn Hird-Rogers  
Dave Mercer  
Sarah Parker  
Frances Tabbornor  
Shirley Vauvelle

**KEY TO SYMBOLS****PE** Preview evening

Winter Open Studios

**ARTIST LOCATIONS**

Additional information and a map for the location of each studio is available on our website: [nyos.org.uk](http://nyos.org.uk)

**Studio Accessibility** ✓ or ● Check NYOS web pages

Check our NYOS artists web pages for more detail.

All of our artists will make you welcome and help with studio access, or viewing alternatives.

**OPENING TIMES**

SUMMER: Sat 7th & Sun 8th June · Sat 14th & Sun 15th June 2025  
10.00am–5.00pm

Preview Friday 6<sup>th</sup> June, 6–9pm (please check symbol in listings)

WINTER: Sat 1st & Sun 2nd November 2025  
11.00am–4.00pm (please check symbol in listings)

Contact artists directly to enquire about mid-week appointments.

North Yorkshire Open Studios invites the public to see inside the usually private world of artists, gain an insight into the creative process, see exclusive new work and explore a variety of inspiring locations along the way.

Look out for the emerging artists, recently graduated or new to the professional scene, all hoping to make their mark with fresh ideas and creative energy.

**Selection Panel**

Julian Hartley from Rural Arts, Carolyn Hird-Rogers from Craven Arts and Daisy Bell from Cramer and Bell Art Consultancy.

**Design**

NYOS

**Print**

GKD Print Limited

**Liability**

NYOS 2025 cannot accept responsibility for members of the public visiting artists' studios or linked activities. Visitors participate in NYOS entirely at their own risk.

**Cover image**

Lindsey Tyson

**Stay connected**

NorthYorkshire OpenStudios

@ny\_open\_studios

[nyos.org.uk](http://nyos.org.uk)

[info@nyos.org.uk](mailto:info@nyos.org.uk)



# Craven Arts House

A catalyst for creativity

**CRAVEN ARTS HOUSE, 55 OTLEY STREET, SKIPTON, BD23 1ET**



**Craven Arts House**, situated in the heart of **Skipton**, offers a range of creative learning experiences for children, adults and professionals. Throughout the year we deliver **workshops, courses and free events** designed to spark imagination and nurture talent.



PETER  
SOWERBY  
FOUNDATION



NORTH  
YORKSHIRE  
COUNCIL

CRAVEN ARTS CHARITABLE TRUST NUMBER: 1172218



# Spring Exhibition

A preview of the North Yorkshire Open Studios at Craven Arts House

FRIDAY 21 MARCH - SATURDAY 10 MAY



**NORTH  
YORKSHIRE  
OPEN  
STUDIOS**



The Spring Exhibition will be hosted at **Craven Arts House, Skipton**. This highly-anticipated event offers a taster of the **North Yorkshire Open Studios 2025**, showcasing the incredible talents of over 200 artists who will be opening their studios to the public later this summer.

Visit our website for more information on events, opening times, competition and how to find us

**THE  
ART  
SHOP**  
SKIPTON

## People's Choice Award

Vote for your favourite artist by 10th May 2025 for your chance to win a bundle of art materials worth over £200. The winning **People's Choice Artist** will win a £200 Voucher to spend at **The Art Shop Skipton**.



[www.cravenarts.co.uk](http://www.cravenarts.co.uk)



# NORTH YORKSHIRE OPEN STUDIOS

## Friends

We are now offering a new option to become a friend of North Yorkshire Open Studios for an annual subscription of £25.

Friends get all the event news first, priority access to the events and special perks including:

- An advance copy of the full-colour NYOS brochure
- Advance knowledge on who has been selected for NYOS
- Friends e-newsletters
- 10% discount on purchases over £100 from NYOS artists during open studio weekends



Sign up on our website  
[www.nyos.org.uk](http://www.nyos.org.uk)



# DALES ARTISTS

The Yorkshire Dales includes some of the finest limestone scenery in the UK, from crags and pavements to an underground labyrinth of caves. Each valley or 'dale' has its own distinct character, set against expansive heather moorland tops.

Stone-built villages sit among traditional farming landscapes of field barns, drystone walls and flower-rich hay meadows.

Spectacular waterfalls and ancient broad-leaf woodland contrast with the scattered remains of former mine workings and other rural industries, which remind us of the area's rich industrial heritage.

Together, nature and people have created a special landscape of immense beauty and character to which artists are drawn for inspiration.

For more information, visit [www.yorkshiredales.org.uk](http://www.yorkshiredales.org.uk)





## 1 Sue Strange



Sue Strange works in oil, acrylic and mixed media. Her primary focus is on colour relationships and landscape forms. Recent exploration of geometric forms have developed into experiments with vibrant broken colour.

**LOCATION** Rosedale Studio, 16 High Fold, Lothersdale, BD20 8HE

**DIRECTIONS** Opposite Quarry Road near a small green

**WHAT3WORDS** watchdogs.took.cork

**PARKING** On street

**ACCESSIBILITY** ●

**W:** <https://suestrange.com>



## 2 Nicole Dickinson

PE

Nicole's landscape paintings depict the moods and atmosphere of North Yorkshire's rugged countryside and coastline, along with its ever-changing weather.

**LOCATION** Lower Kirk Hill Barn, White Hill Lane, Lothersdale BD20 8HX

**DIRECTIONS** We are mid-way along White Hill Lane which is north of Lothersdale.

**WHAT3WORDS** shift.shout.roadblock

**PARKING** On site

**ACCESSIBILITY** ●

**W:** [www.nicoledickinsonartist.co.uk](http://www.nicoledickinsonartist.co.uk)



## 3 Keith Dickinson

PE

Keith concentrates on linocut (relief) plus drypoint and etching (intaglio), inspired mainly by the landscape and coastal areas of Great Britain.

**LOCATION** Lower Kirk Hill Barn, White Hill Lane, Lothersdale BD20 8HX

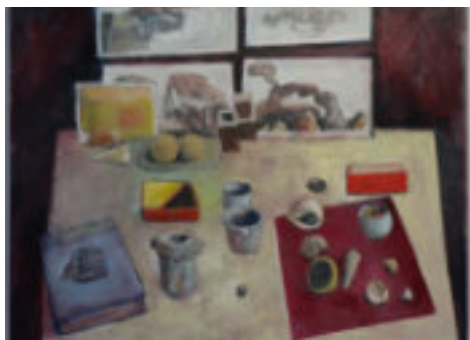
**DIRECTIONS** We are mid-way along White Hill Lane which is north of Lothersdale.

**WHAT3WORDS** shift.shout.roadblock

**PARKING** On site

**ACCESSIBILITY** ●

**W:** [www.keithdickinsonprintmaker.co.uk](http://www.keithdickinsonprintmaker.co.uk)



## 4 David AP Thomas

David paints (mostly) still-life: the careful study of inconsequential objects that can produce works of formal pleasure & strange monumentality. Sometimes it's about taking the ungraspable flood of sensation of being alive, sometimes it's just painting pictures.

**LOCATION** Junction Workshop, 1 Skipton Road, Crosshills, BD20 7SB

**DIRECTIONS** At end of a terrace, next to Burberry.

**WHAT3WORDS** save.marathons.seating

**PARKING** On street

**ACCESSIBILITY** ●

**W:** [www.junctionworkshop.co.uk](http://www.junctionworkshop.co.uk)



## 5 Anna Lambert

Anna Lambert makes slab-built earthenware ceramics with painted slips. Ideas reflect an interest in place, exploring narratives relating to changes in farmland and regeneration of orchards, combining drawing with the abstract qualities of pots.

**LOCATION** Junction Workshop, 1 Skipton Road, Crosshills, BD20 7SB

**DIRECTIONS** At end of a terrace, next to Burberry.

**WHAT3WORDS** opened.waving.factory

**PARKING** On Street **ACCESSIBILITY** ●

**W:** www.junctionworkshop.co.uk



## 6 Lisa Metcalfe



Working from her garden studio, Lisa creates vibrant, intuitive and contemporary art both abstract pieces and landscape paintings. Inspired by colour, texture and the beautiful surrounding area.

**LOCATION** 13 Hardings Lane, Crosshills, Keighley, BD20 7AD

**DIRECTIONS** Turn into Hardings Lane by the level crossing. Turn left before houses down a back street.

**WHAT3WORDS** region.trousers.ambitions

**PARKING** On street **ACCESSIBILITY** ●

**W:** www.lisametcalfeart.com



## 7 Gilly Craven



Gilly works with textiles and machine embroidery, layering and texturing surfaces, giving a three-dimensional feel, inspired by her love of landscape and nature. Gilly focuses on the changing seasons in her garden, local landscape and the sea.

**LOCATION** 1 Sawley Barn, Sawley Croft, Cononley, Keighley, BD20 8NZ

**DIRECTIONS** Opposite Cononley Primary School

**WHAT3WORDS** trustees.bronzes.caravans

**PARKING** On street **ACCESSIBILITY** ●

**W:** www.facebook.com/gillycraventextiles



## 8 Ellie Taylor



Ellie is a textile artist influenced by the Romantic, recording walks and emotional journeys. Simple stitches and poetical phrases impart a feeling of calm.

**LOCATION** Studio 1, Craven Arts House, 55 Otley Street, Skipton, BD23 1ET

**DIRECTIONS** From Skipton centre, the far end of Otley Street, set back from the road.

**WHAT3WORDS** hiked.situation.headsets

**PARKING** On site **ACCESSIBILITY** ✓

**W:** www.instagram.com/ellie\_taylor\_textile\_art/







## 9 Mary Waterfall



Mary paints dramatic skies, changing seas and wild moors, chasing light movement and atmosphere. Each piece shares her connection with nature and the feeling that we are tiny passengers in this vast universe.

**LOCATION** Craven Arts House, 55 Otley Street, Skipton, BD23 1ET

**DIRECTIONS** A converted school at the end of the one-way Otley Street

**WHAT3WORDS** mammals.goodbye.pokes

**PARKING** On site and street **ACCESSIBILITY** ✓

**W:** marywaterfallart.com



## 10 Jane Carlisle Bellerby

Jane has developed a practice creating work for both indoor and outdoor settings, applying mixed media (including natural objects and manmade rubbish) onto hand-painted and eco-dyed silk.

**LOCATION** Craven Arts House, 55 Otley Street, Skipton, BD23 1ET

**DIRECTIONS** A converted school at the end of the one-way Otley Street

**WHAT3WORDS** fuss.dialect.driftwood

**PARKING** On site and street **ACCESSIBILITY** ✓

**W:** www.janecarlisesilkart.co.uk



## 11 Cum-by arts



Bev's interdisciplinary approach to watercolours enables serendipity to reveal an essence of place. She explores the fusion of the medium with textures that codify her emotional response to the uplands of the Yorkshire Dales.

**LOCATION** Craven Arts House, 55 Otley Street, Skipton, BD23 1ET

**DIRECTIONS** A converted school at the end of the one-way Otley Street

**WHAT3WORDS** mammals.goodbye.pokes

**PARKING** On site and street **ACCESSIBILITY** ✓

**W:** www.cumbyearts.com



## 12 Joan Murray

Long experience with a wide range of patterns, textures, colours, silhouettes and yarns means that many decisions are made by instinct as the work takes shape, usually around the idea of a living, moving body. Joan continues to knit and weave. Drawing, collaging and painting inspire her creative work.

**LOCATION** 41 Otley Street, Skipton, BD23 1EL

**DIRECTIONS** Follow NYOS signs

**WHAT3WORDS** endlessly.straying.scramble

**PARKING** Nearby car park **ACCESSIBILITY** ●

**W:** joanmurray.uk



### 13 Julie Bruce



Julie is inspired by the landscape around her; her work is about vibrant colour, pattern and simplification of what is there whilst retaining a real sense of place. She uses oils and mixed media to create variety and texture in her work.

**LOCATION** 26 Close House Road, Skipton, BD23 6DN

**DIRECTIONS** 3rd house in from the end of the cul-de-sac on the right hand side

**WHAT3WORDS** cheaply.permanent.successor

**PARKING** On street **ACCESSIBILITY** ✓

**W:** [www.juliebruceart.com](http://www.juliebruceart.com)



### 14 Mark Butler



Mark is a sculptor working mainly in bronze. Although he is using metal, he harnesses chance in his casting methods to create pieces which appear fragile and in the process of disintegrating, mirroring the impermanence and vulnerability of the environment around him.

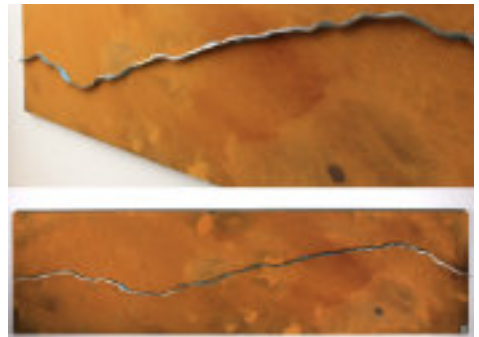
**LOCATION** Mill Bridge Gallery, 3 Mill Bridge, Skipton BD23 1NJ

**DIRECTIONS** Opposite The Castle Inn

**WHAT3WORDS** swan.insolvent.concerned

**PARKING** Nearby car park **ACCESSIBILITY** ●

**W:** [www.msbutlersculptor.co.uk](http://www.msbutlersculptor.co.uk)



### 15 Peter Wilkin



Peter is an international, award-winning, mixed media artist who uses digital painting, mobile (iPhone) photography and cyanotypes to create his art. His work has been displayed at galleries throughout Europe.

**LOCATION** Mill Bridge Gallery, 3 Mill Bridge, Skipton BD23 1NJ

**DIRECTIONS** Opposite The Castle Inn

**WHAT3WORDS** swan.insolvent.concerned

**PARKING** Nearby car park **ACCESSIBILITY** ✓

**W:** [peterwilkinart.com](http://peterwilkinart.com)



### 16 Carolyn Hird-Rogers



Carolyn's illustrations and landscapes come from a love of the colour, texture and linear qualities of her surroundings at the edge of the Yorkshire Dales. Wildlife and wild views feature as framed original collages or mixed-media cards and prints.

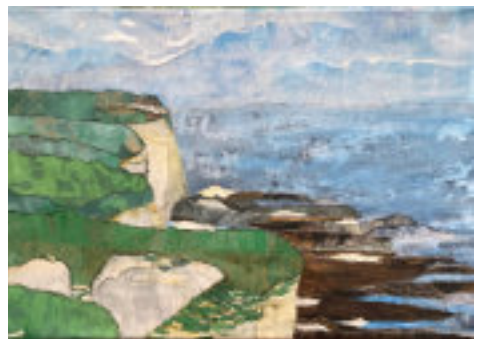
**LOCATION** 57 Gargrave Road, Skipton, BD23 1QA

**DIRECTIONS** Between Ermysteads & Skipton Girls Schools opposite Gainsborough Court

**WHAT3WORDS** posts.dressings.measuring

**PARKING** On street **ACCESSIBILITY** ●

**W:** [www.instagram.com/carolynhirdrogers](https://www.instagram.com/carolynhirdrogers)







## 17 John Sherwood

PE

John Sherwood's 'Amalgams' comprise text and other visual elements added to and juxtaposed within the picture space. John uses a range of materials and techniques. Most recently, he has been exploring digital technology, as well as working with a variety of picture shapes, sizes and surfaces.

**LOCATION** 69 Raikes Road, Skipton, BD23 1LN

**DIRECTIONS** Look for gargoyles on our gateposts

**WHAT3WORDS** streaks.tracking.parkland

**PARKING** On street

**ACCESSIBILITY** ✓

**W:** johnsherwoodarts.com



## 18 Allison Wiffen



Allison makes bold and colourful ceramic work, with a retro feel. Most pieces are made on the potter's wheel, and painted by hand, making each piece unique. The work is both decorative and functional.

**LOCATION** Higherland House, West Street, Gargrave, BD23 3RJ

**DIRECTIONS** Go over the canal, studio is in the barn attached to the black and white house

**WHAT3WORDS** spill.hoped.legend

**PARKING** On street

**ACCESSIBILITY** ✓

**W:** www.awceramics.co.uk



## 19 Judy Metcalfe

In Judy's practice she makes eco printed art pieces using plants and flowers from her garden which leave their mark on fabric or paper using heat. She also makes Cyanotype prints using pre-coated fabrics.

**LOCATION** Esh Bottom, Bell Busk, Skipton, BD23 4DU

**DIRECTIONS** From Coniston Cold follow lane under railway viaduct. First house on the left. (White house set back from road).

**WHAT3WORDS** local.warp.layers

**PARKING** On site

**ACCESSIBILITY** ●

**W:** www.facebook.com/judymetcalfetextileartist



## 20 Valerie Emerson

A really great year for Val, the use of oil paints, an exciting adventure. Now finding so many more ways to explore and develop, also to incorporate her textile background.

**LOCATION** Scar Lodge, 13 Hardy Grange, Grassington, BD23 5AJ

**DIRECTIONS** Off the square in Grassington. Follow NYOS signs

**WHAT3WORDS** plodding.escorting.tonight

**PARKING** Limited

**ACCESSIBILITY** ●

**W:** valemmersonart.wordpress.com



## 21 Robert Keep



Robert gets his inspiration from the countryside around him, mainly Wharfedale. He uses a variety of media including Watercolour, Acrylic and Charcoal.

**LOCATION** The Smithy, 4 Main Street, Grassington, BD235AP

**DIRECTIONS** Grassington Main Street just below the square

**WHAT3WORDS** unsettled.tighttest.nursery

**PARKING** Village centre or car park

**ACCESSIBILITY** ✓



## 22 Katharine Holmes

Inspired by and immersed in the landscape of her native Yorkshire Dales and the wilder fringes of Britain and Ireland. Katharine paints and draws outside in the ever-changing weather and light.

**LOCATION** High Barn Cottage, Malham, BD23 4DJ

**DIRECTIONS** From village centre, take Cove Road, pass Beck Hall, take first lane on left. Or walk along Back Lane from YDNPA car park

**WHAT3WORDS** completed.staring.parkway

**PARKING** On site or car park **ACCESSIBILITY** ●

**W:** [www.katharineholmes.co.uk](http://www.katharineholmes.co.uk)



## 23 Fiona Armer

Inspired by wild places and mountains, Fiona's etchings communicate the stark tracery of branches against winter skies, or the infinite range of tones in the towering cliffs at Malham Cove.

**LOCATION** High Barn Cottage, Malham, BD23 4DJ

**DIRECTIONS** From village centre, take Cove Road, pass Beck Hall, take first lane on left. Or walk along Back Lane from YDNPA car park

**WHAT3WORDS** completed.staring.parkway

**PARKING** On site or car park **ACCESSIBILITY** ●

**W:** [www.fionaarmerartist.co.uk](http://www.fionaarmerartist.co.uk)



## 24 Rakein Studio



Kairen's abstract art is vibrant, colourful, and fuses a wide variety of materials, creating deeply layered effects. Her subject matter explores a more gentle side of the Dales.

**LOCATION** Sandrigg Laithe, Gildersleets Lane, Giggleswick, BD24 0JZ

**DIRECTIONS** From A65 heading north, turn right at the exit before the Craven Arms exit, towards Giggleswick. Studio 100yds on the left

**WHAT3WORDS** rank.redefined.smarter

**PARKING** On site **ACCESSIBILITY** ✓

**W:** [www.instagram.com/rakein\\_studio](https://www.instagram.com/rakein_studio)







## 25 IMS Ceramics

Iona creates functional and sculptural ceramic pieces, she has developed specific glazes, throwing techniques, textiles and gathered wild clays to replicate the textures and colours of lichens. Encouraging the viewer to become environmentally aware and to explore ideas about relationships, the vulnerability and resilience of life.

**LOCATION** Giggleswick School, Settle, BD24 0DE

**DIRECTIONS** Follow NYOS signs

**WHAT3WORDS** conquests.elite.glad

**PARKING** Nearby car park **ACCESSIBILITY** ●

**W:** [www.imsceramics.com](http://www.imsceramics.com)



## 26 Frank Gordon

Frank Gordon is a landscape artist. A lifetime's experience of hill-walking finds full expression in his paintings.

**LOCATION** Haymeads, The Mains, Giggleswick, Settle, BD24 0AX

**DIRECTIONS** From Settle cross the River Ribble. Take 2nd road on the right (The Mains) and Haymeads is 5th on the left, a white bungalow

**WHAT3WORDS** uproot.fronted.tadpole

**PARKING** On street **ACCESSIBILITY** ●

**W:** [www.frankgordon.co.uk](http://www.frankgordon.co.uk)



## 27 Christine Horsewill

Christine has been hand-crafting unique contemporary silver and copper jewellery for over 20 years. The wilder parts of Britain are a strong influence on her designs.

**LOCATION** The Old Sawmill, Riverside, Clapham, LA2 8DS

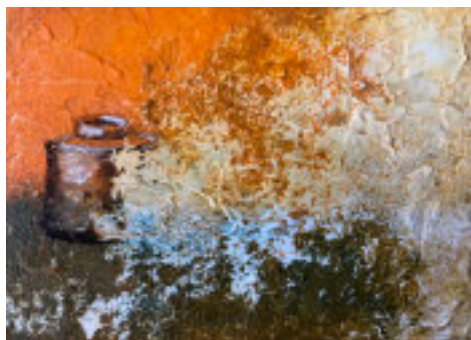
**DIRECTIONS** At the top of the village at the entrance to the nature trail

**WHAT3WORDS** geese.used.droplet

**PARKING** Nearby car park, disabled on site

**ACCESSIBILITY** ●

**W:** [instagram.com/christinehorsewill](https://www.instagram.com/christinehorsewill)



## 28 Annie Farrer

Annie paints from memory the Ingleborough area she has known all her life and more recently still-life based on treasured objects, exploring texture and extending her palette.

**LOCATION** The Reginald Farrer room, the Old Sawmill, Riverside, Clapham, LA2 8DS

**DIRECTIONS** Top of the village at nature trail entrance

**WHAT3WORDS** clues.roosters.cROUTONS

**PARKING** Nearby car park, disabled on site

**ACCESSIBILITY** ●

**W:** [www.anniefarrer.com](http://www.anniefarrer.com)



## 29 Tony Roberts



Tony works from landscape, still-life, and metaphysical themes. Treating subjects interpretively, formalising and investigating the drawing process. Gesture, line, mark making and an intuitive approach to colour are as much the subject of his work as the observed image.

**LOCATION** Wenning Studios, 5A Robin Lane,  
High Bentham, LA2 7AB

**DIRECTIONS** At the bottom of Robin Lane

**WHAT3WORDS** backers.gearbox.attaching

**PARKING** On street

**ACCESSIBILITY** ●

**W:** lunesdalearts.co.uk



## 30 Terry Hird



Terry's paintings reflect his passion for the hills and mountains of the immediate area - The Three Peaks and the not so far away Lake District and Howgills.

**LOCATION** Waterside, 6 Brookland, Burton in Lonsdale,  
Carnforth, LA6 3ND

**DIRECTIONS** From Burton in Lonsdale, left into Brookland  
just before bridge. End house on right

**WHAT3WORDS** encrusted.amplifier.revolting

**PARKING** On site and street

**ACCESSIBILITY** ●

**W:** terryhirdart.co.uk



## 31 Brian Hindmarch



Brian's artwork is sourced from landscape, seascape and natural history. He works in the open, drawing, painting and collecting imagery which is then developed as printmaking.

**LOCATION** Studio 89b, 'i' Centre, Back Gate, Ingleton,  
LA6 3BT

**DIRECTIONS** Use car park adjacent to 'Seasons Bakery'.  
Front access intercom, tap in name / 68b

**WHAT3WORDS** aquatics.vowing.blogs

**PARKING** Nearby car park

**ACCESSIBILITY** ✓

**W:** www.brianhindmarch-artist.co.uk



## 32 Penny Hunt



Based in Horton-in-Ribblesdale, Penny's studio gives views of mountains, moorlands and mist; her work is about the places where you feel the full force of wind and weather and find some perspective on life. Her surroundings are a constant inspiration.

**LOCATION** The Knoll, Horton in Ribblesdale, BD240HD

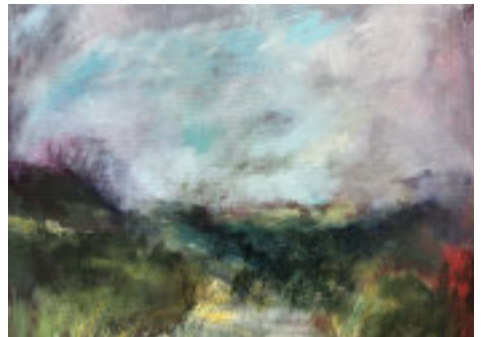
**DIRECTIONS** From Settle enter Horton, pass church on right,  
studio is just after the next field on your right.

**WHAT3WORDS** superhero.headlight.nuptials

**PARKING** On site

**ACCESSIBILITY** ✓

**W:** www.penny-hunt.co.uk







### 33 Hester Cox



Using multiple plates, painted textures and intricate cutting in her collagraphs, Hester explores her encounters with wildlife, seasonal changes in the landscape and our relationship with nature. Her current work celebrates priority species, birds and their habitats.

**LOCATION** The Knoll, Horton in Ribblesdale, BD240HD

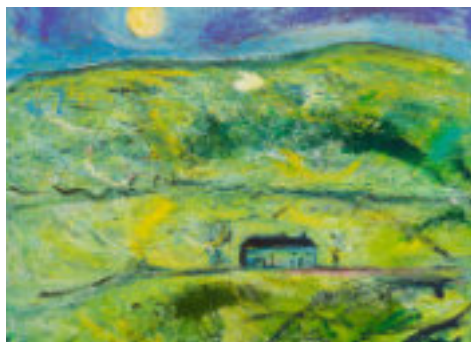
**DIRECTIONS** From Settle enter Horton, pass church on right, studio is just after the next field on your right.

**WHAT3WORDS** post.sides.eruptions

**PARKING** On site

**ACCESSIBILITY** ●

**W:** [www.hestercox.com](http://www.hestercox.com)



### 34 Kitty North

Powerful and imposing yet intimate and inviting, these canvasses are inspired by the rural Yorkshire landscape in which Kitty North lives and works. They are paintings with visceral qualities in which one can immerse oneself.

**LOCATION** Prospect Gallery, Arncliffe, BD23 5QE

**DIRECTIONS** Behind Prospect House (two doors to the right of The Falcon Inn)

**WHAT3WORDS** entrust.intention.glorious

**PARKING** On street

**ACCESSIBILITY** ●

**W:** [www.kittynorth.com](http://www.kittynorth.com)



### 35 Hannah Scully

Hannah is an artist based in the North of England. Her practice explores printmaking and sculpture. She is passionate about working with low impact and recycled materials as well as found objects.

**LOCATION** Duerley Farm, Gayle, Hawes, DL8 3SG

**DIRECTIONS** Nearly 2 miles, up the steep hill out of Gayle.

There is a farm track which will be signposted

**WHAT3WORDS** wasp.outgrown.amazed

**PARKING** On site

**ACCESSIBILITY** ●

**W:** [www.hannahscully.com](http://www.hannahscully.com)



### 36 Rachel Morrell

Rachel is inspired by the scars, desolate moorland, coastline, ruins and industrial remains of North Yorkshire. She uses oil, acrylics and textiles to suggest an impression of the landscape and the many layers in her work are representative of the strata of its history.

**LOCATION** Whitfield, Helm, Askrigg, DL8 3JF

**DIRECTIONS** Head North from Bainbridge to Askrigg, left turn to Helm. Right at hill brow. Middle house

**WHAT3WORDS** chefs.satin.listings

**PARKING** On site

**ACCESSIBILITY** ●

**W:** [www.rachelmorrell.co.uk](http://www.rachelmorrell.co.uk)



## 37 Julie Edwardson

PE

Julie is fascinated by the effects of light through the trees and reflecting off water. She records memories and experiences of being immersed in the landscape.

**LOCATION** Yore Mill Craft Shop & Gallery, Church Bank Aysgarth, DL8 3SR

**DIRECTIONS** Access through gallery (up steps) or from ground level through door under the arch.

**WHAT3WORDS** supple.shrubbery.backyards

**PARKING** Nearby car park **ACCESSIBILITY** ✓

**W:** yoremillcraftshopandgallery.co.uk/artist-maker/julie-edwardson



## 38 Jane Ellis



Jane uses the drawing process to develop ideas and express reactions to the subject. Some drawings happen, some struggle, some fall by the wayside.

**LOCATION** Unit 9 Reeth Dales Centre, Silver Street, Reeth, DL11 6SP

**DIRECTIONS** From Reeth take road towards Muker, 1st turning on right after Two Dales Bakery.

**WHAT3WORDS** richly.fires.fermented

**PARKING** On site **ACCESSIBILITY** ✓

**W:** www.jane-ellis-drawings.com



## 39 Graculus Sculptures



Michael creates unique quirky sculptures from recycled materials. Growing up in an industrial region with access to all sorts of old tools and materials nurtured creativity and exploration of materials and processes.

**LOCATION** Studio 6, Dales Centre, Silver St., Reeth, DL11 6SP

**DIRECTIONS** From Reeth 150m up the main road towards Kirkby Stephen. Dales Centre is on the right.

**WHAT3WORDS** increases.crispier.applause

**PARKING** On site **ACCESSIBILITY** ✓

**W:** www.graculus.co.uk



## 40 Martin Lever

International award-winning artist Martin Lever is now embracing a new muse and creating a new body of work, inspired by the dramatic environment surrounding his new home in Marrick in the Yorkshire Dales.

**LOCATION** Studio Overdale, Marrick, DL11 7LQ

**DIRECTIONS** From the A6108 turn off and cross a narrow bridge, signposted Marrick. Overdale House is first house on right when entering Marrick.


**WHAT3WORDS** saunas.scowls.aquatics

**PARKING** On street **ACCESSIBILITY** ●


**W:** www.artbymartinlever.com








**Yore Mill**  
CRAFT SHOP & GALLERY




- Visit – Our Shop and Gallery for works by the finest local and regional artists and makers.
- Stay – We have fabulous accommodation overlooking Aysgarth Falls.
- Create – We have a range of exciting art classes.
- Gaze – We are a dark-sky friendly business involved in astronomical events

Church Bank, Aysgarth DL6 3SR  
Website: [yoremillicraftshopandgallery.co.uk](http://yoremillicraftshopandgallery.co.uk)



**HAWTHORN**  
PRINTMAKER  
SUPPLIES

Quality manufacturer of printing presses, inks and supplies



01904 488602 or 07855 621841  
[colours@hawthornprintmaker.co.uk](mailto:colours@hawthornprintmaker.co.uk)  
[hawthornprintmaker.com](http://hawthornprintmaker.com)



**WINTER OPEN STUDIOS**

**1<sup>st</sup> & 2<sup>nd</sup> November 2025**  
**11.00am to 4.00pm**

Many of our artists are taking part in our winter open studios on the first weekend in November. This is the perfect time to buy gifts not available on the High Street, and support your local economy.

Please check the symbols for participating artists by finding the snowflake ❄ on their profiles.



## Sign-up to our North Yorkshire Cultural Network Newsletter



Find out what the team has been working on, explore exciting opportunities for collaboration, and stay up to date on the latest cultural events and projects happening across North Yorkshire.

We're here to support your creativity and help grow the cultural scene in our incredible region.



**Stay tuned, and let's celebrate the vibrant cultural life of North Yorkshire together!**



Our gallery shows a changing programme of exhibitions from local and national artists and crafts people.

We showcase community projects and our museum collection.

There are lots of opportunities to get hands on with workshops and interactive elements of our shows.

**Open: Monday to Saturday,  
9.30am - 4.30pm**



@skiptontownhall




**SKIPTON  
TOWN HALL**

Culture, Heritage & Community



You will find a wide range of ever-changing exhibitions, perhaps a national touring show of painting, photography, sculpture and crafts, or an exhibition drawn from the Harrogate District Fine Art Collection, and contemporary work by regional artists.

**Open: Tuesday to Sunday,  
9:30am - 5pm**

 mercergallery

 @mercercartgallery





## Poems by Ian McMillan

This year, North Yorkshire Open Studios have commissioned a set of poems from the talented Yorkshire poet Ian McMillan. We decided to commission these poems to show that the arts encompass a much broader range than just visual arts. To achieve this, the steering group chose artists from across various disciplines.

We encourage you to take the time to read the poems and reflect on how they make you feel. When you stand in front of an artwork, how do you feel? What emotions does it evoke? Take your time to appreciate the thought and effort that went into their work.

### OPEN

That moment when you push  
At the open door and the door  
sings

With art's beautiful music.

That split second of a first  
meeting

Between you

And a fully realised world.

Here is an open utopia of seeing  
And believing, a clear window  
Into all these spaces,  
All these brushes in jars, all  
these

Walls that love has illustrated,  
All those questions



Photograph © Adrian Mealing

That paint is answering, and  
metal

Is pondering, and clay  
Is thinking really hard about.

Yes, a perfect world  
Would be a map of Open  
Studios

That kept opening and opening

And opening until every space  
Was brimming with magic  
And you wanted to stay for ever  
In these welcoming places  
That brimmed with the  
possibilities  
Of leaving things open.

So let's leave things  
Open.

*By Ian McMillan*





## **'Love in a Mist'**

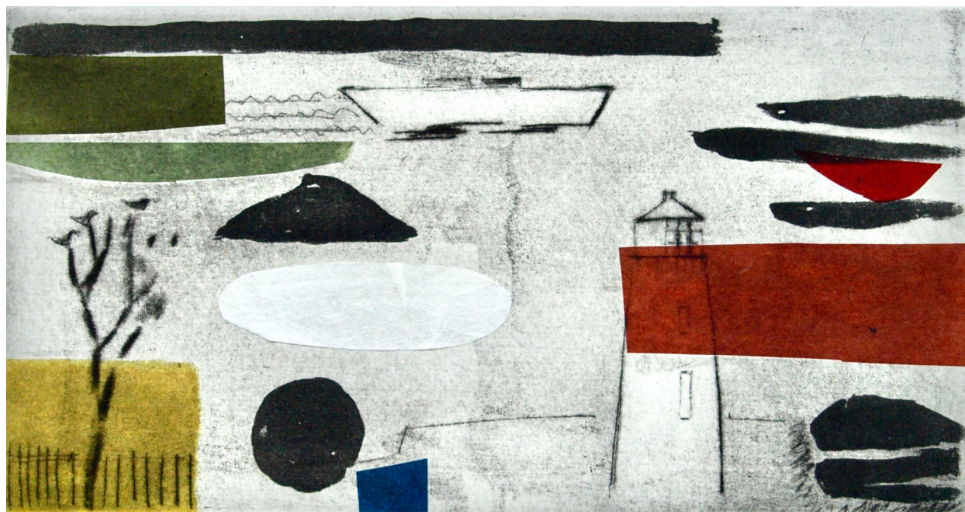
(Michael Kusz)

He found love in a mist; a palimpsest of meaning leaning into itself. He thought hard about the definition of love and he thought hard about the meaning of mist and the two things coalesced, processed, built and rebuilt themselves into something solid and jubilant.

Walk slowly towards this piece and discover what making is, how making shapes and reforms the air around us, the world about us, makes us see and feel things differently. Metal, shining in the morning sun, metal, gleaming in the evening moon. Mist made metal. Love made metal. No matter how long I stare at this mist, it never clears. But love still shines through.

*By Ian McMillan*





Rachel Anne Grigor, *Out of the Harbour*, Steel etching & chine collé, Plate size 10 x 18.5cm

## Main Gallery Exhibitions 2025

May 10 - 24  
Rachel Anne Grigor  
Original prints

June/July  
Summer Showcase  
Paintings, prints, ceramics & jewellery

August 9 - 23  
Janine Burrows  
Paintings

Established in 1988, the Zillah Bell Gallery exhibits work by established and emergent artists, specialising in original prints and paintings.

ZILLAH BELL GALLERY  
15 KIRKGATE, THIRSK,  
NORTH YORKSHIRE, YO7 1PQ  
[www.zillahbellgallery.co.uk](http://www.zillahbellgallery.co.uk)



01845 522479  
[info@zillahbellgallery.co.uk](mailto:info@zillahbellgallery.co.uk)  
Open Monday - Saturday  
10.00 - 17.00



# CENTRAL ARTISTS

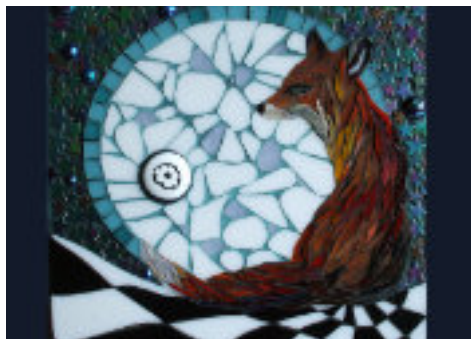
Set in the heart of North Yorkshire, this spectacular area features sweeping hills, rich valleys, grand estates, charming market towns and picturesque villages.

Throughout the Harrogate area, expect to see exquisite gardens, beautiful parks, handsome tree-lined boulevards and take a chance to lose yourself in the charm and elegance of North Yorkshire's heritage.

From Turner to Barbara Hepworth, the central heart of North Yorkshire has inspired creative work in a variety of forms and continues to do so.

For more information, visit [www.visitthetownofyorkshire.com](http://www.visitthetownofyorkshire.com)





## 41 The Mosaic Room

Stained glass, tiles, ceramic, vintage jewellery and more are collected and worked together using colour, shape & texture, to create inspired images from the natural world.

**LOCATION** The Old Stables, Hurworth Grange, Darlington, DL22BN

**DIRECTIONS** Turn into Hurworth Grange near Pelican crossing. Studio is at left side of car park, below metal staircase.

**WHAT3WORDS** uniforms.riot.cocoons

**PARKING** On site **ACCESSIBILITY** ✓

**W:** [www.facebook.com/juliehandmosaicartist](https://www.facebook.com/juliehandmosaicartist)



## 42 Julia Noble

PE ❄️

Julia's artistic focus has always been movement, the power of an image to create a perception or sense of movement, especially in the creative relationship between the viewer and the art.

**LOCATION** Noble Fine Art, Birkby Lane, East Cowton, DL7 0DX

**DIRECTIONS** Located next to BRM and as you enter Magna Rise (New Housing Development).

**WHAT3WORDS** catchers.else.mouse

**PARKING** On street **ACCESSIBILITY** ●

**W:** [julianobleart.co.uk](http://julianobleart.co.uk)



## 43 The Wonky Jewellery Company PE

Intrigued and inspired by her surroundings, Lou's work is random, and emotional. Abstract, experimental and potentially dysfunctional, Lou uses an array of entangled processes within her work, creating unique and bold jewellery designs.

**LOCATION** Unit 6, Greenbelt Holdings, Borough Road, Gallowfields trading estate, DL10 4SX

**DIRECTIONS** Past garden centre and on your left

**WHAT3WORDS** wasps.fended.prefer

**PARKING** On street **ACCESSIBILITY** ●

**W:** [www.thewonkyjewellerycompany.co.uk](http://www.thewonkyjewellerycompany.co.uk)



## 44 Jaci Stroud

PE ❄️

Jaci captures moments in time with dramatic movement or peaceful rest in her vibrant watercolour inks. Inspired by her childhood in Kenya and Bangladesh, she paints primarily wildlife in a playful and expressive style.

**LOCATION** Goosewing Studios, The Station, Station Yard, Richmond, DL10 4 LD

**DIRECTIONS** On the ground floor of The Station, opposite The Angels' Share Bakery.

**WHAT3WORDS** rejoins.slipped.goofy

**PARKING** On site **ACCESSIBILITY** ✓

**W:** [www.artistjacistroud.com](http://www.artistjacistroud.com)



## 45 Goosewing Studios

PE ❄️

Carol Watson uses recycled materials to design her colourful jewellery and packaging, finishing necklaces and earrings with silver. She undertakes repairs and commissions.

**LOCATION** Goosewing Studios, The Station, Station Yard, Richmond, DL10 4 LD

**DIRECTIONS** On the ground floor of The Station, opposite The Angels' Share Bakery.

**WHAT3WORDS** rejoins.slipped.goofy

**PARKING** On site **ACCESSIBILITY** ✓

**W:** www.goosewingstudios.co.uk



## 46 Carol Metcalfe

Carol produces decorative, ash-glazed stoneware forms, inspired by Dales landscapes. She incorporates textures of leaves, weed seeds and found objects, collected around her studio.

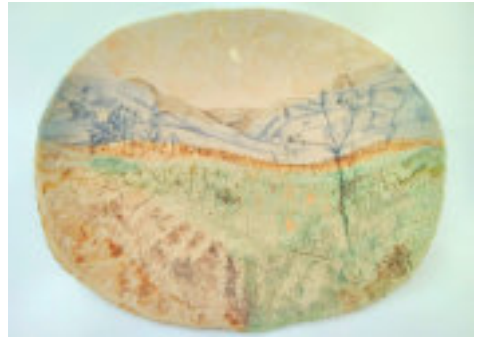
**LOCATION** Wintylow Farm Cottage, Brough Park, Richmond, DL10 7PL

**DIRECTIONS** Through Equestrian Centre on Breckenbrough Ln continue onto farm track for approx 250m

**WHAT3WORDS** bullion.potato.lads

**PARKING** On site **ACCESSIBILITY** ●

**W:** carolmetcalfeceramics.simdif.com



## 47 Malcolm Barker

Malcolm Barker is a farmer and artist living in the Vale of York. He paints in oils while selling potatoes during the winter months at Leyburn and Northallerton marts.

**LOCATION** Moor House Farm Scruton, Northallerton, DL7 0QN

**DIRECTIONS** Follow NYOS signs

**WHAT3WORDS** soils.indicates.congested

**PARKING** On site **ACCESSIBILITY** ●

**W:** www.malcolmbarker.com



## 48 Moray Welsh

PE

Life as a solo cellist left little time for the other string to his bow - painting. With a move to The Dales from London in 2018, the focus changed from colour in sound to colour in paint, which he now does in oils.

**LOCATION** 87 Dale Grove, Leyburn, DL8 5GA

**DIRECTIONS** Enter Dale Grove from the A6108. After 3 sharp bends take the spur to the left next to No 83. No 87 is bottom left.

**WHAT3WORDS** doubts.valid.dispensed

**PARKING** On street **ACCESSIBILITY** ✓

**W:** www.moraywelsh.com







## 49 Karen Marshall



The colours, textures and shapes of landscape are the foundation for our life and industry. Karen's pastel paintings, and original prints are a response to what she sees and experiences in the Yorkshire Dales and beyond, across the year as the landscape tells its stories.

**LOCATION** 8 East Witton Rd, Middleham, DL8 4NX

**DIRECTIONS** From the market place, the last house on the right as you leave town towards East Witton.

**WHAT3WORDS** plotted.loves.argued

**PARKING** Market square **ACCESSIBILITY** ●

**W:** [www.instagram.com/klc.klm\\_pastels\\_and\\_prints](https://www.instagram.com/klc.klm_pastels_and_prints)



## 50 Fiona Land

Fiona is fascinated by people and the joy of portrait painting for her is being able to take the time to really look hard and explore the enigma of her fellow humans.

**LOCATION** The Old Hall, Jervaulx, Ripon, HG4 4PH

**DIRECTIONS** Head to Jervaulx Abbey on the A6108 and turn into the drive for Jervaulx Hall on the corner just past the Abbey, then turn left into the gravel drive for The Old Hall.

**WHAT3WORDS** opened.lock.bench

**PARKING** On site **ACCESSIBILITY** ●

**W:** [www.fionaland.art.tilda.ws](https://www.fionaland.art.tilda.ws)



## 51 Jo Garlick

Jo takes her inspiration from all elements of the natural world. She works predominantly in soft pastels, to create vibrant pictures of British wildlife and landscapes, inspired by the character and heritage of the area. Jo is also a keen printmaker.

**LOCATION** Jo Garlick Studio, Thirn, HG4 4AU

**DIRECTIONS** From Masham/Bedale, drive through Thirn, studio is last on right before leave the village.

**WHAT3WORDS** sheepish.remake.slogans

**PARKING** On site **ACCESSIBILITY** ●

**W:** [www.jogarlick.co.uk](https://www.jogarlick.co.uk)



## 52 Richard Burnley

Richard has been making ceramics for several years after retiring as a furniture designer and maker. He makes thrown and handbuilt pots which are refined and elegant forms with simple glazes. He also makes male and female torso sculptures. The ceramics will be exhibited on his handmade contemporary furniture.

**LOCATION** 19 Front Street, Sowerby, Thirsk, YO7 1JG

**DIRECTIONS** Close to St Oswald's church in Sowerby

**WHAT3WORDS** vowed.tripling.radiates

**PARKING** On street **ACCESSIBILITY** ●



### 53 Jane Burnley

Inspired by colour and landscape, Jane works intuitively in mixed media. She never plans her work, but allows it to emerge and develop. She generally produces small abstract landscapes, but also creates more spiritual work and upcycles children's board books into pieces of art.

**LOCATION** 19 Front Street, Sowerby, Thirsk, YO7 1JG

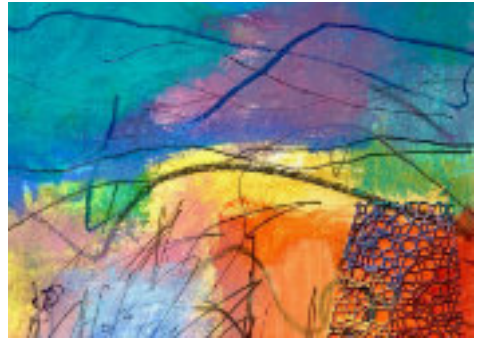
**DIRECTIONS** Close to St Oswald's Church in Sowerby

**WHAT3WORDS** vowed.tripling.radiates

**PARKING** On street

**ACCESSIBILITY** ●

**W:** www.janeburnley.co.uk



### 54 Paul Laycock

Most of Paul's current work is wheel-thrown stoneware and porcelain through which he is exploring a variety of vase, bowl and bottle forms. He enjoys experimenting with different glazing techniques, always searching for the perfect match of form and decoration.

**LOCATION** 64 Front Street, Sowerby, Thirsk, YO7 1JF

**DIRECTIONS** Opposite St Oswald's Church

**WHAT3WORDS** condition.consonant.losses

**PARKING** On street

**ACCESSIBILITY** ●

**W:** www.instagram.com/paul.laycock



### 55 Joseph Ludkin - Croft Pottery

Joseph makes reduction fired pottery from his Croft Pottery studio. Whilst Japanese and Korean pottery traditions influence his forms and techniques he also draws inspiration from the county through a response to its dramatic topography and through the use of raw materials foraged from the surrounding landscape.

**LOCATION** Croft Pottery, Thornycroft, Rainton, YO7 3PH

**DIRECTIONS** Croft Pottery sign on wall at front of house.

**WHAT3WORDS** lungs.holds.hockey

**PARKING** On site and street

**ACCESSIBILITY** ✓

**W:** www.josephludkin.com



### 56 Sue Sheard

PE❄️

Sue Sheard is a self-taught landscape artist who enjoys working with gouache on cotton rag and canvas. She specialises in painting landscapes from North Yorkshire and the Dales on mini canvas.

**LOCATION** Unit 4, Tower Hill Industrial Units, Grewelthorpe, Ripon, HG4 3DS

**Winter** - check nyos.org.uk website

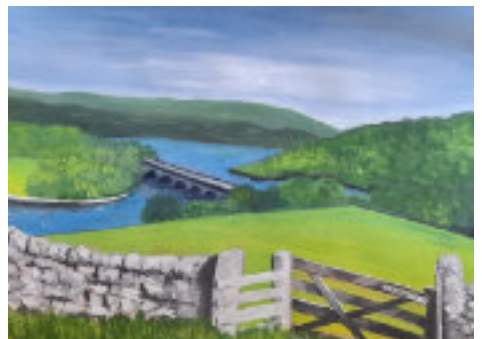
**DIRECTIONS** Follow signs for Tower Hill Industrial Units

**WHAT3WORDS (SUMMER)** coffee.geese.them

**PARKING** Opposite studio

**ACCESSIBILITY** ●

**W:** www.kkb-designs.co.uk







## 57 Liz Harvey

PE ❄️

Liz is a fine artist inspired by natural forms, landscape and light. Forms are observed and abstracted as she works in oils and mixed media in her rural studio just outside Grewelthorpe.

**LOCATION** Unit 4, Tower Hill Industrial Units, Grewelthorpe, Ripon, HG4 3DS

**DIRECTIONS** Follow signs for Tower Hill Industrial Units

**WHAT3WORDS** coffee.geese.them

**PARKING** On site

**ACCESSIBILITY** ●

**W:** [www.lizharveyartuk.com](http://www.lizharveyartuk.com)



## 58 Johnny Sunter

PE ❄️

Johnny is a sculptor interested in mythological tales and the future of humankind. Drawing on a visual vocabulary informed by post-war modernism, his work is boisterous and impish, characterised by strong asymmetrical forms.

**LOCATION** Rowan Barn, Marton Le Moor, Ripon, HG4 5DJ

**DIRECTIONS** B6265, The Balk onto Chapel Lane. First left turn after the Chapel into a Private Road

**WHAT3WORDS** snaps.sculpting.book

**PARKING** On street

**ACCESSIBILITY** ✓

**W:** [www.johnnysunter.co.uk](http://www.johnnysunter.co.uk)



## 59 Andrea Mosey

From her studio at Newby Hall Andrea works as an oil painter and encaustic wax artist. Her work centres around a deep-rooted connection to atmospheric landscapes with serene and ethereal skies. New for 2025 - Encaustic wax paintings.

**LOCATION** 18 The Stables, Newby Hall, Ripon, HG4 5AE

**DIRECTIONS** Follow NYOS signs from Newby Hall's driveway

**WHAT3WORDS** reserves.tastings.plunge

**PARKING** On site

**ACCESSIBILITY** ●

**W:** [www.andreamosey.com](http://www.andreamosey.com)



## 60 Gowan Jewellers

PE ❄️

Joanne creates fine artist jewellery in gold, platinum, silver & gemstones, using traditional techniques such as forging, carving, piercing and repousse. The one-off jewels and 'picture' pieces are created individually, often with representational themes.

**LOCATION** 8 King Street Studios, The Old Workhouse, Pateley Bridge, Harrogate, HG3 5LE

**DIRECTIONS** Behind The Nidderdale Museum

**WHAT3WORDS** greeting.acted.irony

**PARKING** On site

**ACCESSIBILITY** ✓

**W:** [www.gowanjewellers.co.uk](http://www.gowanjewellers.co.uk)



## 61 Alice Clarke

PE

Alice has always been drawn to the raw, organic beauty of nature. It's often the overlooked details and oddities that captivate her sense of wonder and ignite her creativity.

**LOCATION** Studio 9, King Street Workshops, The Old Workhouse, Pateley Bridge, HG3 5LE

**DIRECTIONS** Ground level, in the top right hand corner of King Street Workshops

**WHAT3WORDS** next.reinforce.shelving

**PARKING** Nearby car park **ACCESSIBILITY** ✓

**W:** www.aliceclarke.co.uk



## 62 Gill Kirk

PE❄️

Gill is a fine artist, printmaker and designer maker - an eclectic mix. She focuses on landscapes, flora and fauna of the Yorkshire Dales where she lives and runs a gallery.

**LOCATION** Number 6 Studio Gallery, The Old Workhouse, Pateley Bridge, Harrogate, HG3 5LE

**Winter** - Jack Albert & Gill 2, 4 King's Court, Pateley Bridge, HG3 5JW

**DIRECTIONS** Follow NYOS signs

**WHAT3WORDS (SUMMER)** roaming.ourselves.javelin

**PARKING** On site and street **ACCESSIBILITY** ✓

**W:** gillkirkartist.co.uk



## 63 Shirley Hudson

❄️

Shirley paints 'en plein air' and from her home studio. Recent paintings are a response to woodland and river views within North Yorkshire. Working in acrylics, watercolour, drawing and print Shirley explores light and colour in this landscape.

**LOCATION** 2 Almshouses, Nidd, North Yorkshire, HG3 3BP

**DIRECTIONS** Low red brick building as enter the village. Entrance directly at end of the row.

**WHAT3WORDS** enhances.dramatic.evaporate

**PARKING** On site **ACCESSIBILITY** ●

**W:** www.shirleyhudson.co.uk



## 64 Steph Hayes

PE❄️

Painting love, life and nature in colour, Steph Hayes is an immersive abstract and figurative artist. Inspired by nature and the emotional tapestry of life, Steph loves to explore a deeper world beyond our everyday senses.

**LOCATION** 15 Thomas Drive, Killinghall, Harrogate, HG32FA

**DIRECTIONS** Follow NYOS signs

**WHAT3WORDS** wonderful.tempting.bearable

**PARKING** On street **ACCESSIBILITY** ✓

**W:** www.stephayes.studio







## 65 Smitton Ceramics

PE

Susan is a ceramics artist who creates thoughtfully crafted pieces with a strong connection to the natural world, often finding their form representative of powerful feminine energy. Susan provides workshops in her studio to create and connect through the medium of clay.

**LOCATION** The Barn, Chain bar lane, Hampsthwaite, Near Harrogate, HG3 2BS

**DIRECTIONS** Chain Bar Lane from A59, Barn is on the right

**WHAT3WORDS** laugh.destiny.senders

**PARKING** On site

**ACCESSIBILITY** ●

**W:** [www.instagram.com/smitton\\_ceramics](https://www.instagram.com/smitton_ceramics)



## 66 Braythorne Baskets

PE❄️

Fiona, a basket maker from North Yorkshire, began her professional career in 2022 and has a deep interest in historic baskets. In 2024, she earned a QEST Emerging Maker Grant, funding a two-year Level 3 City & Guilds Basketry course to further refine her skills and techniques.

**LOCATION** High Braythorne Farm, Church Lane, Stainburn, Otley, LS21 2LW

**DIRECTIONS** Just before red telephone box on your right

**WHAT3WORDS** parade.undivided.fits

**PARKING** On site

**ACCESSIBILITY** ●

**W:** [braythorne.co.uk/basket-making](https://braythorne.co.uk/basket-making)



## 67 Caroline Machray

PE❄️

Caroline is predominately a figurative artist. Life drawing underpins her practice. Beyond observation, mood and chance dictate the medium, line, colour, and technique. Whether through simple lines or complex abstraction she is constantly fascinated with the human form and the space it occupies.

**LOCATION** 16 Almsford Avenue, Harrogate, HG2 8HD

**DIRECTIONS** Follow NYOS signs

**WHAT3WORDS** sand.fence.rugs

**PARKING** On street

**ACCESSIBILITY** ●

**W:** [carolinemachray.com](https://www.carolinemachray.com)



## 68 Andrew Moodie

PE❄️

Andrew seeks to create energy and expressiveness in his work, reflecting his own lifestyle. His favourite medium is soft pastel and he is an Associate Artist with Unison Pastels. He often works in mixed media, combining wet media with pastel. His principal subject is the Yorkshire landscape.

**LOCATION** 1 Firs Road, Harrogate, HG2 8HA

**DIRECTIONS** Firs Road is opposite Leeds Road M&S

**WHAT3WORDS** clips.judges.falls

**PARKING** On street

**ACCESSIBILITY** ●

**W:** [andrewmoodie.art](https://www.andrewmoodie.art)



## 69 Harrogate College

PE

My MA Creative Practice cohort curate a show of their current work enabling them to display to an audience, learning about pricing and marketing and engaging in conversation with the public and understanding the importance of curation.

**LOCATION** Harrogate College, Hookstone Road, Hornbeam Park, HG28QT

**DIRECTIONS** Follow NYOS signs

**WHAT3WORDS** scared.heat.daring

**PARKING** On site **ACCESSIBILITY** ✓

**W:** harrogate-college.ac.uk



## 70 Frances Tabbernor



Award-winning artist Frances draws inspiration from the stunning coastal landscapes encountered on her walks. Her paintings blend vivid memories and emotions with the beauty of the sea, creating works that offer a sense of escapism and deep connection to nature. Her work has appeared on the BBC.

**LOCATION** 69 Tewit Well Road, Harrogate, HG2 8JL

**DIRECTIONS** Tewit Well Road from A61. 2<sup>nd</sup> on the left.

**WHAT3WORDS** bridge.habit.quiz

**PARKING** On street **ACCESSIBILITY** ✓

**W:** www.francetabbernor.co.uk



## 71 Jennifer Calder

PE

Jenni is an animal artist who is inspired by the local Yorkshire wildlife, especially hares, foxes and mice! Mainly using acrylics on canvas, she builds up layers of detail and glazes to convey the essence and spirit of the animals she depicts.

**LOCATION** 31 Cavendish Avenue, Harrogate, HG2 8HY

**DIRECTIONS** From Stray Rein, to end of Cavendish Avenue, the red brick house on left.

**WHAT3WORDS** taking.lake.places

**PARKING** On street **ACCESSIBILITY** ●

**W:** www.jennifercalderart.com



## 72 Jim Sykes

Jim takes pleasure painting urban landscape and seaside views of North Yorkshire and further afield. His paintings are colourful and populated by people and animals enjoying themselves.

**LOCATION** Coach House, 2 Leeds Road, Harrogate, HG2 8AA

**DIRECTIONS** Behind 2 Leeds Road and accessed by the driveway beside the main house.

**WHAT3WORDS** solid.muddy.unique

**PARKING** On street **ACCESSIBILITY** ●







### 73 Mel Lisney

Mel creates decorative, often dramatic, work featuring annealed metal leaf. Inspired by Art Nouveau and Art Deco, she combines naturalistic elements with geometric form. Mel invites the viewer to take a mindful moment to experience the play of light on her 2D and 3D pieces.

**LOCATION** Flat 1, 13 West Cliffe Grove, Harrogate, HG2 0PS

**DIRECTIONS** Follow NYOS signs

**WHAT3WORDS** trees.rates.mile

**PARKING** On street **ACCESSIBILITY** ●

**W:** [www.mindfulart.uk](http://www.mindfulart.uk)



### 74 Balbinder Broadbent

Balbinder is an abstract painter and printmaker. Her work is rooted in the creative process. Intuitively and spontaneously through gestural marks, the dynamics of composition and colour shift and evolve as the painting takes form.

**LOCATION** Garden Flat, 3 Victoria Road, Harrogate, HG2 0HQ

**DIRECTIONS** On Victoria Road at the bottom of the hill

**WHAT3WORDS** cherry.stem.calms

**PARKING** On street (disc) **ACCESSIBILITY** ●

**W:** [www.balbinderbroadbent.com](http://www.balbinderbroadbent.com)



### 75 Sandra Storey

PE

Sandra explores the talisman-like quality of significant plants and objects within the North York Moors landscape. Printmaking, drawing and painting are often combined to produce single prints or small editions.

**LOCATION** 5 Oak Terrace, Harrogate, HG2 0EN

**DIRECTIONS** Travelling down Victoria Road, Oak Terrace is a left turn just after Royal Gardens

**WHAT3WORDS** libraries.verse.erase

**PARKING** On street (disc) **ACCESSIBILITY** ●

**W:** [www.sandrastoreyartist.com](http://www.sandrastoreyartist.com)



### 76 Mark Elvins

PE ❄️

Mark makes colourful, contemporary, original, hand-made lino prints of landscapes in Yorkshire, the Lake District and Scotland ranging from small 3-layer multiblock hand-pressed 15x15cm prints to large 50x50cm reduction prints. He exhibits in Lake District, Midlands and Scottish galleries.

**LOCATION** 20 East Park Road, Harrogate, HG1 5QT

**DIRECTIONS** Follow NYOS signs

**WHAT3WORDS** crowds.harp.loaded

**PARKING** On street **ACCESSIBILITY** ●

**W:** [www.markelvins.com](http://www.markelvins.com)



## 77 Elena Putley



Elena's artwork features expressive cityscapes and landscapes, blending both real and imagined elements. Elena delves into the intricate beauty, chaos, and structured nature of urban environments, gradually layering them to reflect the commonalities of various locations.

**LOCATION** 2 Studley Road, Harrogate, HG1 5JU

**DIRECTIONS** Follow NYOS signs

**WHAT3WORDS** keen.acting.push

**PARKING** On street (disc)

**ACCESSIBILITY** ●

**W:** www.elenaputley.co.uk



## 78 Andrew Stratford

PE

Andrew is a contemporary artist who tries to capture movement, atmosphere and emotion in the landscape with varied and spontaneous mark-making. His work is semi-abstract and through careful use of colour and texture he endeavours to retain a sense of place and the human connection to it.

**LOCATION** 40 Albert Place, Harrogate, HG1 4QA

**DIRECTIONS** Just off A59, opposite St Andrews Church

**WHAT3WORDS** snack.botanists.degrading

**PARKING** Street/church car park **ACCESSIBILITY** ●

**W:** stratfordart.co.uk



## 79 Sherry Doyal



Sherry Doyal makes art and fine craft inspired by botany and botanical materials. Current body of work reflections on sacred springs and Holy wells with the associated botany and cultural history.

**LOCATION** 14 Kirkgate, Knaresborough, HG5 8AD

**DIRECTIONS** Follow NYOS signs

**WHAT3WORDS** crackles.surprises.skirt

**PARKING** Nearby car park

**ACCESSIBILITY** ●

**W:** tanacetum.co.uk



## 80 Fiona Odle

PE

Fiona is an impressionist painter working from her studio Briggate Art in Knaresborough. She loves exploring texture and layering through mark-making with pieces of discarded plastic to create depth.

**LOCATION** Briggate Art Studio, 9a Briggate, Knaresborough, HG5 8BQ

**DIRECTIONS** Follow NYOS signs

**WHAT3WORDS** leaned.snips.digested

**PARKING** On site

**ACCESSIBILITY** ●

**W:** www.fionaodle.com







## 81 Clare Maria Wood

My paintings are an emotional response to my environment and an effort to convey the powerful force of Nature. I work intuitively, layering paint, collage and drawing, often sanding back the surface to reveal hidden marks which echo the eroding landscape around me.

**LOCATION** Orchard Croft, 15 Crag Lane, Knaresborough, HG5 8EE

**DIRECTIONS** Crag Lane just beyond King James School

**WHAT3WORDS** donation.texted.hydration

**PARKING** On site and street **ACCESSIBILITY** ●

**W:** [www.claremariawood.co.uk](http://www.claremariawood.co.uk)



## 82 Karen J Ward



Karen produces beautiful wearable art that draws on her love of the natural world. Using precious metals and carefully selected gemstones, her fascination for moving and shaping metal allows her to realise her ideas as tactile, "one off" pieces.

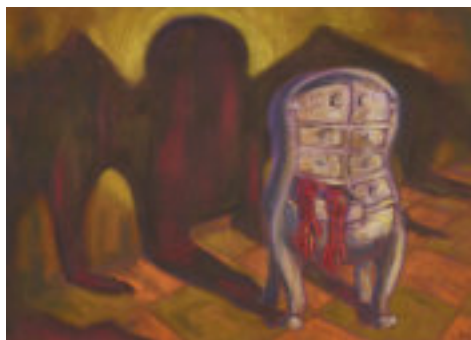
**LOCATION** Southway, Millfield Road, Chapel Haddlesey, Selby, YO8 8QF

**DIRECTIONS** Follow NYOS signs

**WHAT3WORDS** fluid.rivals.bottom

**PARKING** On site **ACCESSIBILITY** ●

**W:** [www.karenjward.co.uk](http://www.karenjward.co.uk)



## 83 Elise Bikker



Elise's latest sculptures and pastel drawings accompany a body of creative texts she is working on, exploring the power of memory and the emotions resulting from the inevitable passing of time and the transience of existence.

**LOCATION** The Aviary, Millfield Road, Chapel Haddlesey, YO8 8QF

**DIRECTIONS** Next to the village hall

**WHAT3WORDS** table.ballparks.adults

**PARKING** On site **ACCESSIBILITY** ●

**W:** [www.elisebikkerartist.co.uk](http://www.elisebikkerartist.co.uk)



## 84 Helen Drye



Helen creates silver jewellery inspired by Skipwith Common National Nature Reserve. Her jewellery has a woodland theme featuring hares and birds from the Common, and the woodland itself. The light between the trees, the walkways and open common land.

**LOCATION** 2 Fountains Close, Station Road, Riccall, York, YO19 6QN

**DIRECTIONS** The studio is behind the Village Hall

**WHAT3WORDS** lately.dozen.parked

**PARKING** On street **ACCESSIBILITY** ●

**W:** [www.silver-stonejewellery.co.uk](http://www.silver-stonejewellery.co.uk)



## 85 Yvonne Hoggarth

PE ❄️

Yvonne is a printmaker and painter, exploring place and nature, and our relationship to both. Her work explores the fleeting beauty of nature and plants in seed, bloom and decay. She also focuses on the architectural detail of churches and abbeys and their change through time.

**LOCATION** 30a High Street, Tadcaster, LS24 9AT

**DIRECTIONS** Down Tadcaster High Street towards brewery, turn right into carpark

**WHAT3WORDS** owned.trace.grows

**PARKING** Free car park **ACCESSIBILITY** ●

**W:** [www.instagram.com/yvonnehoggarth.art](https://www.instagram.com/yvonnehoggarth.art)



## 86 Beth Elsdon

PE ❄️

Beth's work explores the essence of emotions and connection to nature's grounding force. Inspired by the tranquility that nature gives us and the emotions music evokes, her work seeks to inspire calm in the chaos of our lives.

**LOCATION** 30a High Street, Tadcaster, LS24 9AT

**DIRECTIONS** Down Tadcaster High Street towards brewery, turn right into carpark

**WHAT3WORDS** owned.trace.grows

**PARKING** Free car park **ACCESSIBILITY** ●

**W:** [www.bethelsdonart.com](https://www.bethelsdonart.com)



## 87 Emma James

PE ❄️

Emma's work is strongly influenced by the landscape close to her home: the wild moors, dales, and coast. She paints wild dramatic places for those who love the ever changing Yorkshire landscape and dream to escape there.

**LOCATION** 39 Copmanthorpe Lane, Bishopthorpe, York, YO23 2QR

**DIRECTIONS** Follow NYOS signs

**WHAT3WORDS** teach.solid.ledge

**PARKING** On street **ACCESSIBILITY** ✓

**W:** [emmajamesgallery.com](https://emmajamesgallery.com)



## 88 Alex Ash

Inspired by the dramatic, changing seas of North Yorkshire, where she was born and now lives, Alex creates abstract seascapes. She works with a range of media, but predominantly ink, acrylic, and gold leaf; all her work is then finished with a shiny resin glaze.

**LOCATION** 79 Heslington Lane, York, YO10 4HN

**DIRECTIONS** From A19, right onto Heslington Lane. Half way down on the left before Grants Avenue.

**WHAT3WORDS** gifts.studio.hoot

**PARKING** On street **ACCESSIBILITY** ●

**W:** [alexashartwork.co.uk](https://alexashartwork.co.uk)







## 89 Dee Thwaite



Inspired by the vast ever-changing sea and landscape of the Yorkshire coastlines, Dee's paintings aim to capture an emotional and energetic response to her surroundings. Drawn to overcast skies, storms and the changing seasons, she hopes to capture a sense of movement and drama in her work.

**LOCATION** 10 Bedale Avenue, Osbaldwick, York, YO10 3NF

**DIRECTIONS** Follow NYOS signs

**WHAT3WORDS** shades.often.unable

**PARKING** On street

**ACCESSIBILITY** ●

**W:** [www.deethwaiteartist.co.uk](http://www.deethwaiteartist.co.uk)



## 90 Veronica Ongaro



Nature is the unlimited source of inspiration and the driving force of Veronica's stained glass, ceramics and printmaking. Its colours and their combinations, the shapes and patterns, the simplicity and complexity of the living world in constant change are represented in Veronica's work.

**LOCATION** 16 Richardson Street, York, YO23 1JU

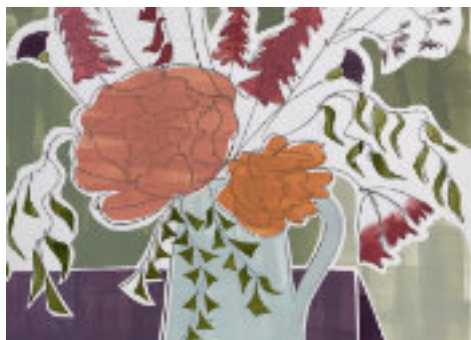
**DIRECTIONS** Richardson St second to the end on the right

**WHAT3WORDS** mugs.dots.pencil

**PARKING** Nearby car park

**ACCESSIBILITY** ●

**W:** [www.instagram.com/vongaroart](http://www.instagram.com/vongaroart)



## 91 Rachel Jones



Rachel works in print, paint and collage, inspired by her local environment and the plants that surround and enrich her everyday life. She paints and rolls layers of oil paints onto mono prints delighting in textures, roller marks and print lines in her finished works.

**LOCATION** 16 Richardson Street, York, YO23 1JU

**DIRECTIONS** Richardson St second to the end on the right

**WHAT3WORDS** mugs.dots.pencil

**PARKING** Nearby car park

**ACCESSIBILITY** ●

**W:** [www.instagram.com/racheljones.artintheloft](http://www.instagram.com/racheljones.artintheloft)



## 92 Laura Duval



Working primarily with copper, using a combination of traditional smithing techniques, along with her love of texture. Laura creates simple, understated and elegant work, from bowls to decorative items and jewellery.

**LOCATION** South Bank Studios, 97 Bishopthorpe Rd, York, YO23 1NX

**DIRECTIONS** At Southlands Methodist Church at junction of Bishopthorpe Road and Southlands Road.

**WHAT3WORDS** island.emerge.yoga

**PARKING** On site

**ACCESSIBILITY** ●

**W:** [lauradawnduval.wordpress.com](http://lauradawnduval.wordpress.com)



### 93 Karen Winship

Working mainly in acrylics Karen's keen focus on the interplay of light and its transformative effects on objects and moods takes many guises, including landscape, still life and her first love, portraiture.

**LOCATION** South Bank Studios, 97 Bishopthorpe Rd, York, YO23 1NX

**DIRECTIONS** At Southlands Methodist Church at junction of Bishopthorpe Road and Southlands Road.

**WHAT3WORDS** island.emerge.yoga

**PARKING** On site

**ACCESSIBILITY** ●

**W:** [www.karenwinshipart.co.uk](http://www.karenwinshipart.co.uk)



### 94 Donna Maria Taylor

Donna is a mixed media artist. Her current work incorporates collage, acrylics, watercolour and inks experimenting with different techniques to achieve layered and unusual effects.

**LOCATION** Studio 1, South Bank Studios, 97 Bishopthorpe Rd, York, YO23 1NX

**DIRECTIONS** At Southlands Methodist Church at junction of Bishopthorpe Road and Southlands Road.

**WHAT3WORDS** island.emerge.yoga

**PARKING** On site

**ACCESSIBILITY** ●

**W:** [www.donnamariataylor.com](http://www.donnamariataylor.com)



### 95 Di Gomery



Di's painting is inspired by still-life, landscape, and ceramic ware. Primarily in oil, she employs a degree of lyrical abstraction and playfulness and builds layers of paint to create texture and a lush surface of colour.

**LOCATION** Studio 4, South Bank Studios, 97 Bishopthorpe Rd, York, YO23 1NX

**DIRECTIONS** At Southlands Methodist Church at junction of Bishopthorpe Road and Southlands Road.

**WHAT3WORDS** island.emerge.yoga

**PARKING** On site

**ACCESSIBILITY** ●

**W:** [www.digomery.com](http://www.digomery.com)



### 96 Caroline Utterson



Inspired by nature and the beautiful Yorkshire landscape freehand machine embroidery is used to 'draw' details. Colour is added with paint and fabric appliqué. Intricate beading and hand embroidery adds the finest details.

**LOCATION** Studio 0, South Bank Studios, 97 Bishopthorpe Rd, York, YO23 1NX

**DIRECTIONS** At Southlands Methodist Church at junction of Bishopthorpe Road and Southlands Road.

**WHAT3WORDS** island.emerge.yoga

**PARKING** On site

**ACCESSIBILITY** ●

**W:** [carolineutterson.square.site](http://carolineutterson.square.site)







## 97 Jacqueline Warrington



Jacqueline is both a jeweller and silversmith, working in gold, silver and precious/non precious stones. She uses traditional tools and techniques and specialises in chasing and repousse work. As well as designing and making her own range of jewellery, she often takes on commissions and remodels old, unworn pieces.

**LOCATION** 3 White House Rise, York, YO24 1EE

**DIRECTIONS** Follow NYOS signs

**WHAT3WORDS** traded.puts.proven

**PARKING** On site

**ACCESSIBILITY** ●

**W:** [www.jacquelinewarrington.co.uk](http://www.jacquelinewarrington.co.uk)



## 98 Constance Isobel



Connie uses traditional jewellery making techniques to create exclusive and contemporary precious metalwork. Using silver, gold, precious & semi precious gemstones.

**LOCATION** 3 White House Rise, York, YO24 1EE

**DIRECTIONS** Follow NYOS signs

**WHAT3WORDS** traded.puts.proven

**PARKING** On street

**ACCESSIBILITY** ●

**W:** [www.constanceisobel.com](http://www.constanceisobel.com)



## 99 Jill Tattersall



Jill's work is experimental, concentrating on colour, light, intensity and atmosphere. Frequent subjects are seascapes, night skies and patterns in the natural world. She often works on her own handmade paper and uses many different media with reclaimed & found materials.

**LOCATION** 11 Mt Parade, York, YO24 4AP

**DIRECTIONS** Mt Parade is a narrow leafy road between The Mount and Holgate Road

**WHAT3WORDS** fries.lofts.sock

**PARKING** Nearby car park

**ACCESSIBILITY** ●

**W:** [www.jilltattersall.co.uk](http://www.jilltattersall.co.uk)



## 100 Adele Karmazyn



Adele is a digital photomontage artist. She scans old photographs, extracting the characters from the past and relocating them to an imaginary place. She intertwines her subjects with her own photographs, drawings and paintings (using Photoshop) to tell a story. Artwork is then giclee printed and hand-finished.

**LOCATION** 32 Wilton Rise, Holgate, York, YO24 4BT

**DIRECTIONS** Follow NYOS signs

**WHAT3WORDS** mock.dash.simple

**PARKING** On site and street

**ACCESSIBILITY** ●

**W:** [www.adelekarmazyn.com](http://www.adelekarmazyn.com)



## 101 Mo Nisbet



Mo's work is driven by a fascination with the human form, and the potential to create relationships between viewer and sitter that transcend time and place. After a successful career in Further Education, Mo is now a full time artist and illustrator working in a range of media.

**LOCATION** 116 Acomb Road, York, YO24 4EY

**DIRECTIONS** Follow NYOS signs

**WHAT3WORDS** sheet.keys.habit

**PARKING** On street

**ACCESSIBILITY** ●

**W:** www.monistudio.co.uk



## 102 Robin Grover-Jacques



Bringing the power and majesty of nature into your home! Robin's paintings beautifully capture the ruggedness of our landscape and the indefatigable force of the elements. A truly emotional experience.

**LOCATION** 35 Chestnut Grove, Acomb, York, YO26 5LE

**DIRECTIONS** Studio accessible from B1224 or A59 routes, access via Carr Lane or Danebury Drive

**WHAT3WORDS** arts.scans.tigers

**PARKING** On street

**ACCESSIBILITY** ●

**W:** www.robingj.co.uk



## 103 Fran Brammer



Fran is a landscape artist working in textiles and mixed media. "Found" and manipulated fabrics, old paintings and sketches are layered, painted and stitched to create new surfaces and textures, building the images of Yorkshire landscapes from the Vale, Moors and Dales.

**LOCATION** 81 Jute Road, York, YO26 5ES

**DIRECTIONS** Follow NYOS signs

**WHAT3WORDS** itself.leaned.item

**PARKING** On street

**ACCESSIBILITY** ●

**W:** sites.google.com/site/franbrammer



## 104 Rob Burton



Rob Burton creates vibrant textile and mixed media art. Inspired by literature, iconography, and personal stories. His work celebrates colour, texture, and layered imagery. In symbols, colours, shapes and digitally printed photographs the unexpected often arises in visual tales.

**LOCATION** Rogues Atelier, 28a Fossgate, York, YO1 9TA

**DIRECTIONS** Walk down Fossgate from Stonebow, studio is on left after Remedy cafe in Franklins Yard

**WHAT3WORDS** gender.shapes.books

**PARKING** Nearby car park

**ACCESSIBILITY** ●

**W:** robertburton108.myportfolio.com







## 105 Jo Walton



Jo creates abstract sea/colour-scapes focusing on horizons, using metal-leaf, oil-paint, playing with rust and verdigris on plaster and wooden panels. Her work is inspired by sailing in her twenties delivering yachts, and her childhood years living in Australia.

**LOCATION** Rogues Atelier, 28a Fossgate, York, YO1 9TA

**DIRECTIONS** Walk down Fossgate from Stonebow, studio is on left after Remedy cafe in Franklins Yard

**WHAT3WORDS** gender.shapes.books

**PARKING** Nearby car park

**ACCESSIBILITY** ●

**W:** [www.whatjodidnext.com](http://www.whatjodidnext.com)



## 106 Ric Liptrot

PE

Ric is an illustrator inspired by architecture. Combining collage, stencils and drawing, Ric depicts the uniquely characterful buildings surrounded by him in his studio in central York. As well as the more well-known buildings Ric loves a shop front, especially an independent shop, which York has plenty of.

**LOCATION** PICA Studios, 7a Grape Lane, York, YO1 7HU

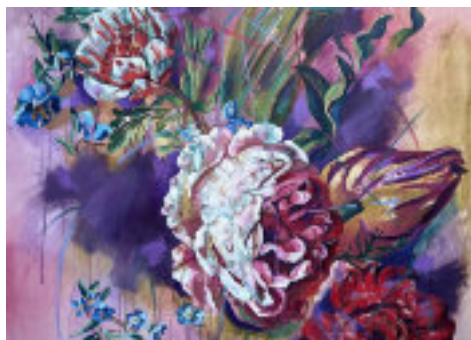
**DIRECTIONS** Ground floor of Quacks the Printers building

**WHAT3WORDS** blaze.guilty.home

**PARKING** Nearby car park

**ACCESSIBILITY** ●

**W:** [www.liptrotillustration.co.uk](http://www.liptrotillustration.co.uk)



## 107 Rae George

PE

This oil painting series reflects the rebellious nature of feminine beauty. It's about strength, embracing change, stepping forward into the unknown with the courage that you have everything you need to not only survive, but thrive.

**LOCATION** PICA Studios, 7a Grape Lane, York, YO1 7HU

**DIRECTIONS** Ground floor of Quacks the Printers building

**WHAT3WORDS** blaze.guilty.home

**PARKING** Nearby car park

**ACCESSIBILITY** ●

**W:** [www.raegeorgeart.co.uk](http://www.raegeorgeart.co.uk)



## 108 Lu Mason

I make rag rugs in the traditional way, hooking strips of recycled cloth through a hessian backing. I am inspired by costume, pattern, words, and the natural world.

**LOCATION** PICA Studios, 7a Grape Lane, York, YO1 7HU

**DIRECTIONS** Ground floor of Quacks the Printers building

**WHAT3WORDS** blaze.guilty.home

**PARKING** Nearby car park

**ACCESSIBILITY** ●

**W:** [madebylumason.weebly.com](http://madebylumason.weebly.com)



## 109 Lisa Power

Drawing on her Irish heritage, Lisa makes representations of abandoned places and neglected traditions with pen and ink and painted relief collage. She tells stories that connect viewers to folklore and ritual. Her images often depict the imperfect beauty of vernacular furniture and buildings to demonstrate these themes.

**LOCATION** PICA Studios, 7a Grape Lane, York, YO1 7HU

**DIRECTIONS** Ground floor of Quacks the Printers building

**WHAT3WORDS** blaze.guilty.home

**PARKING** Nearby car park **ACCESSIBILITY** ●

**W:** [www.instagram.com/lisa\\_power\\_art](http://www.instagram.com/lisa_power_art)



## 110 Lesley Shaw

PE

Lesley Shaw is a figurative artist, using traditional printmaking techniques such as drypoint and lino, as well as mixed media. She works quickly and instinctively with line, striving to capture the simplicity and beauty of the human form, and other animal forms.

**LOCATION** PICA Studios, 7a Grape Lane, York, YO1 7HU

**DIRECTIONS** Ground floor of Quacks the Printers building

**WHAT3WORDS** blaze.guilty.home

**PARKING** Nearby car park **ACCESSIBILITY** ●

**W:** [www.lesleyshawartist.com](http://www.lesleyshawartist.com)



## 111 Katrina Mansfield

PE

Katrina works with alcohol ink on Yupo paper to create vibrant paintings of animals. Yupo paper allows a longer working time with the ink. Together, with a blending solution, she can allow the ink to flow freely across the page to create captivating patterns and shapes within the animals.

**LOCATION** PICA Studios, 7a Grape Lane, York, YO1 7HU

**DIRECTIONS** Ground floor of Quacks the Printers building

**WHAT3WORDS** blaze.guilty.home

**PARKING** Nearby car park **ACCESSIBILITY** ●

**W:** [www.katrinamansfieldartist.co.uk](http://www.katrinamansfieldartist.co.uk)



## 112 Evie Leach

PE

Geometric jewellery designs inspired by rock formations and crystals. Each piece is handmade in silver and often features gold accents and semi-precious gemstones. Contrast is given using oxidation, texture and asymmetry.

**LOCATION** PICA Studios, 7a Grape Lane, York, YO1 7HU

**DIRECTIONS** Ground floor of Quacks the Printers building

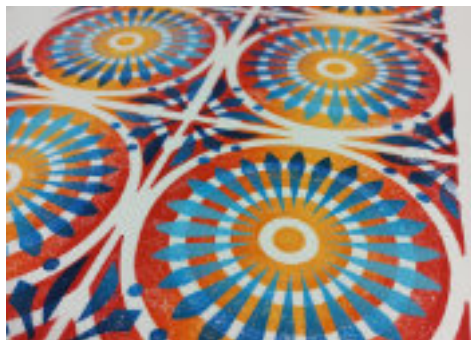
**WHAT3WORDS** blaze.guilty.home

**PARKING** Nearby car park **ACCESSIBILITY** ●

**W:** [www.evieleach.co.uk](http://www.evieleach.co.uk)







## 113 Drawne Up

PE

Andy is a printmaker working with linoleum, wood and letterpress. He produces colourful, high contrast prints of subjects ranging from architecture to the natural world but all with a strong graphic tendency. Andy's work often incorporates aspects of hand lettering, typography, symbols and repetition.

**LOCATION** PICA Studios, 7a Grape Lane, York, YO1 7HU

**DIRECTIONS** Ground floor of Quacks the Printers building

**WHAT3WORDS** blaze.guilty.home

**PARKING** Nearby car park

**ACCESSIBILITY** ●

**W:** www.drawneup.com



## 114 Sam Jones



Sam works mainly in clay to produce ceramic sculptures. Some have mixed media elements, including glass parts which she hand creates from glass rods using a flame torch. Sam will also be showing her glass jewellery at the events.

**LOCATION** 35 Burrill Avenue Clifton York YO30 6HP

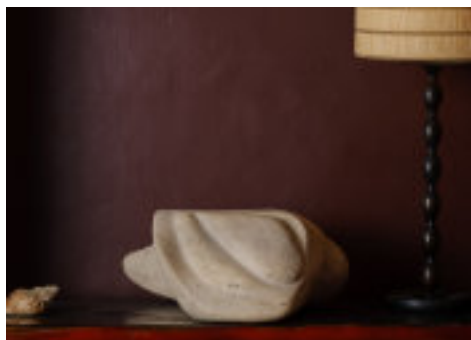
**DIRECTIONS** Cul de sac situated off Crichton avenue near York hospital.

**WHAT3WORDS** robots.smart.tent

**PARKING** On street

**ACCESSIBILITY** ●

**W:** www.samjonesarts.co.uk



## 115 Greenthwaite Sculptor

PE ❄️

Janie carves natural materials, namely local stone. Creative inspiration stems from the natural world. Stone's weathered texture and time-worn spirit can be seen through chisel markings. Imperfections in the stone offer a glimpse of time gone before. Work is tactile and visual.

**LOCATION** Greenthwaite, Chantry Green, Main Street, Upper Poppleton, Nr York YO26 6DL

**DIRECTIONS** Follow NYOS signs

**WHAT3WORDS** voice.spite.sound

**PARKING** On site and street

**ACCESSIBILITY** ✓

**W:** www.thegreenthwaitesculptor.co.uk



## 116 Schiewe Ceramics



Our mission is to build a community that celebrates differences, fosters understanding, and empowers people to discover their identity. Schiewe collects your unique memories and aspirations during a private consultation and turns them into a bespoke ceramic sculpture, resulting in a piece of art as unique as you.

**LOCATION** 9 Lady Kell Gardens Haxby YO32 3NB

**DIRECTIONS** At the bottom of the cul-de-sac

**WHAT3WORDS** pack.entrusted.jetting

**PARKING** On street

**ACCESSIBILITY** ●

**W:** schieweceramics.org



## 117 Gonzalo Blanco



Gonzalo will be exposing perspectives of Yorkshire and his homeland. He endeavours to capture the character of places and times, from where he gathers much of his inspiration. He aims to convey as much energy and pleasure to the viewers as he felt when sketching at those places.

**LOCATION** Rose Dene Moor Lane Strensall YO32 5UQ

**DIRECTIONS** Opposite No 38

**WHAT3WORDS** geek.compelled.masses

**PARKING** On street **ACCESSIBILITY** ✓

**W:** gonzaloblanco64.wixsite.com/exhibition2022



## 118 Gina Bean



The wonderful county of North Yorkshire is the main inspiration for Gina's semi-abstract work although changing subject matter to keep her paintings fresh the occasional flower, animal or bird make an appearance. She works in most media at her studio in the village of Lower Dunsforth.

**LOCATION** The Bentleys, Lower Dunsforth, YO26 9SA

**DIRECTIONS** Follow NYOS signs

**WHAT3WORDS** headings.adjuster.yesterday

**PARKING** On site and street **ACCESSIBILITY** ●

**W:** ginabeanart.uk



## 119 Jeff Parker



Jeff paints on location, using bold, expressive brushwork and vibrant colour to capture the beauty and nuances of the changing seasons. His work offers a unique, personal insight and interpretation of the Yorkshire landscape.

**LOCATION** Roedeer House, Raskelf Road, Raskelf, YO61 3UY

**DIRECTIONS** First house of a terrace on left after entering village from Easingwold

**WHAT3WORDS** organs.romantics.approvals

**PARKING** On street **ACCESSIBILITY** ●

**W:** jeffparkerart.co.uk



## 120 jdeC

New to Yorkshire, Jane has been designing and making one-off bespoke and ready-to-go hats for over 20 years. From high end occasion hats to elaborate or simple but chic fascinators. Hand sewn, client focused, each piece a work of art and always elegant.

**LOCATION** Apple Croft, Gale Road, Alne, YO61 1TH

**DIRECTIONS** Alne exit off the A19, as enter village Gale Road is the first on right, studio half way down on right.

**WHAT3WORDS** puddings.routes.beats

**PARKING** On site **ACCESSIBILITY** ✓







## 121 Freya Horsley

With atmospheric land- and seascape as her starting point, Freya's experimental approach to painting and materials embraces a sense of flux and change in the way we view the world. Working in a variety of painting and drawing media, the works evolve through fluid veils and textured layers.

**LOCATION** Corner Cottage, The Green, Tollerton, YO61 1PX

**DIRECTIONS** Entrance by the village green.

**WHAT3WORDS** crafts.brittle.nipping

**PARKING** On street

**ACCESSIBILITY** ●

**W:** [www.freyahorsley.com](http://www.freyahorsley.com)



## 122 Richard Gray

Richard's painting is largely about chasing the light. Richard loves the wide open spaces in the Vale of York, coast, Moors and Dales. He is inspired by the transitions of light, weather and the seasons.

**LOCATION** Burnside, Spring Street, Easingwold, YO61 3BL

**DIRECTIONS** Corner of Spring Street & Manor Road.

Access via the rear (Manor Road).

**WHAT3WORDS** muffn.shepherds.grapevine

**PARKING** On street

**ACCESSIBILITY** ●

**W:** [www.richardjgray.com](http://www.richardjgray.com)



## 123 Graham Jones

PE

Inspired by the scenery of North Yorkshire, Graham looks for the movement and energy in a landscape and seeks to convey it by combining rough brushstrokes with the textures and 'happy accidents' that result from painting with a palette knife.

**LOCATION** Harland House, Main Street, Huby, YO61 1HQ

**DIRECTIONS** Between village shop and New Inn Chinese restaurant

**WHAT3WORDS** refreshed.giggle.offerings

**PARKING** On street

**ACCESSIBILITY** ●

**W:** [www.grahamjonesartist.co.uk](http://www.grahamjonesartist.co.uk)



## 124 Studio58

PE ❄️

Patrick's work straddles figuration and abstraction in painting and printmaking. Working primarily en plain air Patrick channels the forming forces of nature, capturing the essence of our ever-changing landscape. Influences can be ascribed to 50's modernism and historically the sublime.

**LOCATION** Nesslyn West End, Sheriff Hutton

**DIRECTIONS** Follow NYOS signs

**WHAT3WORDS** waving.bulldozer.starred

**PARKING** On street

**ACCESSIBILITY** ●

**W:** [www.psmithstudios58.com](http://www.psmithstudios58.com)



## 125 Justine Warner

PE ❄️

Justine works in mixed media and recycled fabrics. She is inspired by the natural landscapes, woodlands and seascapes of the North where she documents locations with photographs and sketches in a range of media.

**LOCATION** Laburnum Cottage, West End, Sheriff Hutton, York, YO606SH

**DIRECTIONS** Turn down the side of Highwayman Inn and on the right hand side.

**WHAT3WORDS** commended.cornering.hello

**PARKING** On street **ACCESSIBILITY** ●

**W:** [www.justinewarnerartist.com](http://www.justinewarnerartist.com)



## 126 Andrew Bloodworth

PE ❄️

Inspired by stone and wood, Andrew's abstract paintings seek to convey the textures and sculptural forms of these natural substances. Other more figurative work examines these materials in the environment.

**LOCATION** 1 Stonelands Close, Sheriff Hutton, York, YO60 6SG

**DIRECTIONS** Stone bungalow with white windows on corner of West End and Stonelands Close.

**WHAT3WORDS** teachers.cabs.cobbles

**PARKING** On street **ACCESSIBILITY** ✓

**W:** [www.instagram.com/andrewminerals58](https://www.instagram.com/andrewminerals58)



## 127 Steve Page

PE

Steve creates unique sculptures in wood, stone and plaster. He also casts limited edition pieces, usually from clay originals. He draws his themes from the natural world, imagination and sculpting tradition.

**LOCATION** Church View, East End, Sheriff Hutton, YO60 6SX

**DIRECTIONS** Left at fork onto East End. Church View is stone building 200 metres on left.

**WHAT3WORDS** dwelled.parties.scribble

**PARKING** On site **ACCESSIBILITY** ●

**W:** [www.steve-page-sculpting.co.uk](http://www.steve-page-sculpting.co.uk)







## The Leaping Hare Gallery & Framers

23 Chapel Street, Easingwold, YO61 3AE  
01347 822779

Bespoke Framing

Ceramics

Glass

Textiles

Bronzes

Jewellery

Paintings

Prints

Cards

Books & More!



[www.theleapingharegallery.com](http://www.theleapingharegallery.com)



## Masham Gallery



Over 120 carefully selected artists  
& makers. Creative independent  
people is what we're all about.  
Ethical, sustainable beautiful.

24 Market Place, Masham

[www.mashamgallery.co.uk](http://www.mashamgallery.co.uk)



## Courses in Creative Arts

[www.the-lund.co.uk](http://www.the-lund.co.uk)



The Lund, Easingwold, North Yorkshire, YO61 3PA

017986 737892 [steve@lundstudios.co.uk](mailto:steve@lundstudios.co.uk)





Inspired by Sir John Ruskin, Artistic Tutor Andrew Whitford - 2017 Creative Practice, 2017

An exciting exhibition by students and staff in association with  
**North Yorkshire Open Studios**  
 June 7-8 and 14-15 (10am - 5pm)

APPLY TODAY. START SEPTEMBER.

## MA CREATIVE PRACTICE



Find out more about the course and how to apply by scanning this QR code

➤ [harrogate-college.ac.uk](mailto:harrogate-college.ac.uk)  
 ☎ 01423 879666  
 ✉ [carolach@harrogate-college.ac.uk](mailto:carolach@harrogate-college.ac.uk)

**HC/ HIGHER EDUCATION**

This is a University Centre Leeds course, which is part of Leeds City College and is a member of University Education Group. The course is validated by The Open University.

**HARROGATE COLLEGE**  **The Open University**



**Rural Arts**

## Proud to support North Yorkshire Open Studios

**Opening Times**  
 Tuesday - Saturday  
 10am - 4pm

[ruralarts.org](http://ruralarts.org)

The Courthouse, Westgate, Thirsk, YO7 1QS

Charity registration number: 1081007

## VISITING ARTISTS' STUDIOS AND WONDERING WHAT OUR ACCESSIBILITY ICONS MEAN?

**Studio Accessibility** ✓ or ●

Check our artists NYOS web pages for more detail about studio access. All of our artists will make every effort to make you feel welcome and help you with viewing their artwork.



[info@nyos.org.uk](mailto:info@nyos.org.uk)  
[www.nyos.org.uk](http://www.nyos.org.uk)

 [NY\\_open\\_studios](https://www.instagram.com/NY_open_studios)  
 [NorthYorkshireOpenStudios](https://www.facebook.com/NorthYorkshireOpenStudios)





**'Rolling Wave'**  
(Kit Hemsley)

This coastline, this  
porcelain coastline;  
always changing in the  
studio's changing weather,  
the shifting tides of  
creating. Look closely,  
touch closely, imagine  
freely, dream freely.  
Imagine these pieces found  
in ten thousand years;  
imagine the speculation  
about what they might be:  
sacred objects, memory  
hoards, descriptions of  
something luminous, maps  
of a world that sings. All of

the above: all of the below.

Dream that the air is  
wearing these pieces like  
porcelain clothing. Dream  
that the turning world is  
thinking these pieces into  
being. Dream that this is  
the first time these colours  
have ever been seen.

Meet you at the mythical  
shoreline.

*By Ian McMillan*





### 'Pieta'

(Sarah Sharpe)

The eyes, open and closed.  
Seeing and unseeing. The  
faces that could almost be  
the same face. Could  
nearly be faces in a mirror.  
Apart from those eyes,  
open and closed, seeing  
and unseeing.

There are shadows of  
fallen tears in those open  
eyes. There are shadows of  
undreamed dreams in  
those closed eyes. We look,  
and we listen: there are

stories here, if only we  
could catch them, if only  
we could hold them.

The faces, joined at the  
eyes, daring us to gaze. The  
flowers in the hair: the  
petals, floating like tears.  
The tears that could be  
petals, floating. Seeing  
and unseeing.

Asking us to see. Asking us  
to notice. The stories. The  
dreams. The tears. Look: do  
not turn away.

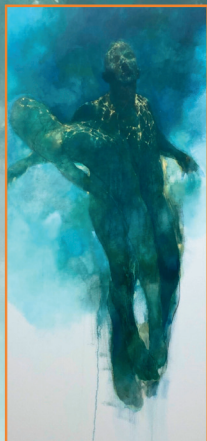
*By Ian McMillan*



# Saltbox

*Artify Your Home...*

GALLERY • GARDEN • GIFTS



WE ARE  
OPEN  
Every Day  
1030 - 430

Saltbox Gallery at 2 Castlegate, Helmsley, North Yorkshire, YO62 5AB  
01439 770 881 • [saltboxoffice@gmail.com](mailto:saltboxoffice@gmail.com) • [www.saltboxgallery.co.uk](http://www.saltboxgallery.co.uk)



[saltbox\\_gallery](https://www.instagram.com/saltbox_gallery)

Find Us On





# MOORS AND COAST ARTISTS

The North Yorkshire coastline encompasses some of the UK's most rugged and charming countryside, from tiny fishing villages clinging to rocky cliffs to glorious stretches of white sand and family-friendly seaside resorts.

Inland, the wonderful North York Moors are a breath of fresh air. Comprising over 1,400 square miles of natural beauty. Look closer and you'll discover historic abbeys, castles and priories, traditional pubs and 'hidden' villages and hamlets.

Generations of artists have been drawn to the dramatic landscape, scenery and weather of North Yorkshire's moors and coast.

For more information, visit [www.visityorkshire.com](http://www.visityorkshire.com)





## 128 Yorkshire Willow Baskets

Angela is an award-winning modern basket designer-maker. Rooted in and inspired by traditional skills and nature, she combines woven willow with woodland materials. Making distinctive traditional baskets, sculptural woodland baskets and garden plant supports.

**LOCATION** Westow Grange Cottage, Westow, YO60 7LU

**DIRECTIONS** Detached red-brick house, surrounded by trees, next to Westow Grange Barn

**WHAT3WORDS** wolf.realm.thighs

**PARKING** On site

**ACCESSIBILITY** ●

**W:** yorkshirewillowbaskets.co.uk



## 129 Boo Barwick-Ward

PE ❄️

Boo uses ceramics and photography as a narrative of memory loss. Having recently completed an MA in ceramics, Boo has been concentrating on creating a fusion between photographs and clay, transferring the images onto the surface of hand built vessels.

**LOCATION** Middle Farm House, Langton, Malton, YO17 9QL

**DIRECTIONS** Follow NYOS signs

**WHAT3WORDS** transmits.hides.area

**PARKING** On site

**ACCESSIBILITY** ✓

**W:** www.boo-artist.com



## 130 Jo Naden

PE ❄️

Inspired by forces and phenomena of the natural world; time and tide, light and shift of season. Forms entice us to ponder, gathering thoughts like shells or fragments, to awaken stories that flow between fact and myth.

**LOCATION** Holly Cottage, Bull Piece Lane, Scagglethorpe, Malton, YO17 8DT

**DIRECTIONS** End terrace, opposite the Chapel, adjacent to the village green.

**WHAT3WORDS** mailer.jots.scrubbing

**PARKING** Village Centre

**ACCESSIBILITY** ●

**W:** jonaden.com



## 131 Sarah Sharpe

PE ❄️

Motherhood, faith, imagination and archetype guide her work. Lived experience, the land Sarah treads, people and their stories inform her. She is an elected member of the Leeds Fine Artists, Manchester Academy of Fine Arts and a member of the Society of Catholic Artists.

**LOCATION** Viriditas Nook, Mill Beck House, 2 Pinewood, Norton, Malton, YO17 9JT

**DIRECTIONS** Turn off The Ridings down a private road.

**WHAT3WORDS** soak.organist.thrones

**PARKING** On site and street

**ACCESSIBILITY** ●

**W:** www.sarahsharpe-art.co.uk



### 132 Piers Edsall

PE ❄️

Piers creates surreal, abstract sculptures using recycled materials, primarily steel. Utilising traditional forging techniques his pieces challenge societal norms and blur the lines between the art and it's functionality.

**LOCATION** Unit 2 pasture lane units, showfield lane industrial estate, Malton, YO17 6BT

**DIRECTIONS** Enter industrial estate, bear left at road fork and far end of red brick units.

**WHAT3WORDS** mural.develops.loves

**PARKING** On site **ACCESSIBILITY** ✓

**W:** [www.environmental-art.co.uk](http://www.environmental-art.co.uk)



### 133 Alison Spaven

PE ❄️

Alison's art is felted with a single needle, using rare breed wool to create her sculptural pictures of British animal life and landscape. She takes her inspiration from the farmland and countryside surrounding her village home, and holidays spent observing wildlife countryside.

**LOCATION** 9 Finkle St, Malton, YO17 7JD

**DIRECTIONS** Opposite the entrance to Boyes

**WHAT3WORDS** suave.gums.ventures

**PARKING** Market Place **ACCESSIBILITY** ●

**W:** [www.thewytcwoodgalleryandstudio.com](http://www.thewytcwoodgalleryandstudio.com)



### 134 Christine Hughes

PE ❄️

Christine is a fine artist and narrator of stories, developing in the form of her illustrations & sculptures, inspired by anecdotal life events and imagined whimsical characters in animal and human form, Christine transforms you into a magical world by use of colour to create original paintings & sculptures to make you smile.

**LOCATION** 7 Market Place, Malton, YO17 7LP

**DIRECTIONS** Opposite the church

**WHAT3WORDS** silently.stop.stub

**PARKING** Market Place **ACCESSIBILITY** ●

**W:** [thegallerymalton.co.uk/pages/resident-artist](http://thegallerymalton.co.uk/pages/resident-artist)



### 135 Ione Harrison

PE ❄️

Ione is a contemporary landscape painter, creating vibrant, atmospheric paintings, and working primarily in watercolour and ink. Ione's work explores our changing relationship to landscape and the natural world.

**LOCATION** Unit 3, Welburn Business Park, Welburn, York, YO60 7EP

**DIRECTIONS** Take Small Animal Entrance turning, up drive, left through farm buildings. Last on the left.

**WHAT3WORDS** kitten.digested.gushes

**PARKING** On site **ACCESSIBILITY** ✓

**W:** [www.ioneharrison.co.uk](http://www.ioneharrison.co.uk)







### 136 Nightingales Pottery

David works with stoneware clay to make useable pottery with particular attention to beauty of form, colour and surface. Over the last ten years he has developed a range of unique glazes, these are often over painted to achieve decorative or dramatic effects.

**LOCATION** Nightingales, Main Street, Welburn, YO60 7DX

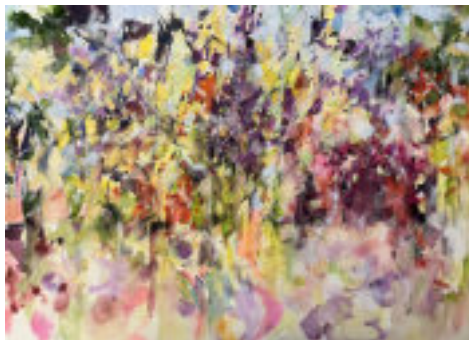
**DIRECTIONS** 3<sup>rd</sup> house after the cafe going towards the A64

**WHAT3WORDS** wiggles.widen.awakening

**PARKING** On street

**ACCESSIBILITY** ●

**W:** [www.instagram.com/Nightingales-pottery](https://www.instagram.com/Nightingales-pottery)



### 137 Deborah Wilkinson

PE

After studying at Jacob Kramer college of Art , Leeds and Chelsea school of Art, London. I became influenced by pattern and textural formations through my observations of nature. Colour has always been integral in my creative process.

**LOCATION** Brackencliffe, Terrington, York , YO60 6QB

**DIRECTIONS** Follow NYOS signs

**WHAT3WORDS** deserved.minimums.about

**PARKING** On street

**ACCESSIBILITY** ●

**W:** [www.deborahwilkinsonartist.co.uk](http://www.deborahwilkinsonartist.co.uk)



### 138 Pamela Thorby

PE ❄️

Pamela makes beautifully crafted, long-lasting pottery for everyday use, seeking rhythm and harmony in her signature forms and decoration. Her ceramics are thrown predominately in porcelain and slip decorated in a painterly fashion.

**LOCATION** Nunnington Pottery, Nunnington Studios, Low Street, Nunnington YO62 5UR

**DIRECTIONS** Follow signs to Nunnington Studios

**WHAT3WORDS** formation.upholds.stirs

**PARKING** On site

**ACCESSIBILITY** ●

**W:** [www.pamelathorby.com](http://www.pamelathorby.com)



### 139 Louise Dwyer

❄️

Handmade jewellery by Louise is a creative process of design and response to materials. Louise creates sketches her pieces of jewellery become entwined, using the qualities of the metals and stones in their various forms creating unique pieces of jewellery to treasure.

**LOCATION** Nunnington Studios, Low Street, Nunnington, YO62 5UR

**DIRECTIONS** Follow signs to Nunnington Studios

**WHAT3WORDS** conquests.married.clocks

**PARKING** On site

**ACCESSIBILITY** ✓

**W:** [www.louisedwyer.com](http://www.louisedwyer.com)



## 140 Jonathan Pomroy

PE ❄️

Jonathan prefers to sketch outside in all weathers, usually in watercolour. His main inspiration comes from observing the natural world, especially birds and landscapes. He believes that art can have an important part to play in conservation and hopes in sharing his passion others will be encouraged to protect nature.

**LOCATION** 4 Pottergate, Gilling East, YO62 4JJ

**DIRECTIONS** Look for five bar gate onto front lawn.

**WHAT3WORDS** quicksand.laces.pickup

**PARKING** On street **ACCESSIBILITY** ●

**W:** jonathanpomroy.wordpress.com



## 141 Stephen Bird

Drawings and paintings from observation and imagination - allegorical, mythological, metaphysical; imagery anchored in the everyday.

**LOCATION** Coram Cottage, Ampleforth, YO62 4DX

**DIRECTIONS** The studio is on the main street of Ampleforth.

The cottage is on the left-hand of the Village Shop and Post Office.

**WHAT3WORDS** presume.impulse.remarking

**PARKING** On street **ACCESSIBILITY** ●

**W:** www.sgbirdart.com



## 142 Millie McCallum

Millie makes painting, prints collages and pots inspired by the natural world

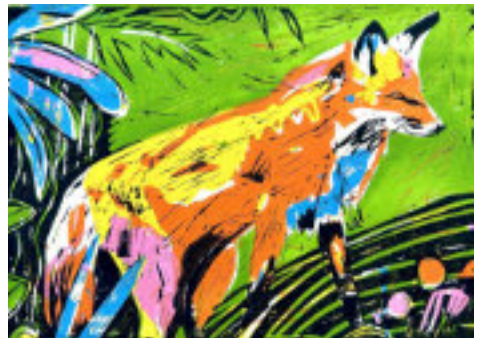
**LOCATION** Court House Framers, 7 Meeting House Court, Helmsley, York, YO62 5WD

**DIRECTIONS** Just next to Helmsley Arts Centre

**WHAT3WORDS** momentous.part.stay

**PARKING** Nearby car park **ACCESSIBILITY** ●

**W:** www.milliemccallum.com



## 143 Ruth King

Ruth makes pots fashioned from soft sheets of clay cut and assembled to wrap and clothe space. The surface enriched by the passage of salt vapours reacts to each twist and turn of the form adding colour, texture and articulation.

**LOCATION** The Old Waterworks, Boltby, YO7 2HU

**DIRECTIONS** Halfway between Boltby Bank and the village of Boltby, by the ford.

**WHAT3WORDS** pocket.octagon.finger

**PARKING** On site **ACCESSIBILITY** ✓

**W:** ruthkingceramics.com







## 144 Marcus Jacka

Making meaningful furniture in a world of cheap industrial design is Marcus's everyday challenge. His pieces are beautiful, thoughtful and well-crafted, from natural materials.

**LOCATION** The Old Waterworks, Boltby, YO7 2HU  
**DIRECTIONS** Halfway between Boltby Bank and the village of Boltby, by the ford.

**WHAT3WORDS** pocket.octagon.finger

**PARKING** On site

**ACCESSIBILITY** ✓

**W:** [www.non-standard.co.uk](http://www.non-standard.co.uk)



## 145 Fiona Robertson



Fiona uses free motion machine and hand embroidery to create highly textured, colourful and intricately layered embroidered landscapes. Her inspiration comes from a direct connection to the landscape throughout the seasons.

**LOCATION** 5 The Beeches, East Harlsey, DL6 2DJ

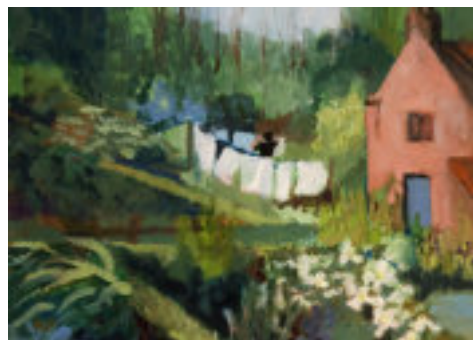
**DIRECTIONS** Follow NYOS signs

**WHAT3WORDS** videos.entertainer.occur

**PARKING** In village

**ACCESSIBILITY** ●

**W:** [www.fionarobertsonartworks.co.uk](http://www.fionarobertsonartworks.co.uk)



## 146 Susan Dugdale

PE

Susan fills sketchbooks from journeys she has made and the landscapes around her. These inform her finished work and help shape her ideas on paper. It is working from life and using these sketches that makes her work feel vibrant and alive.

**LOCATION** Park House, Crathorne, Yarm, TS15 0BD

**DIRECTIONS** Follow NYOS signs

**WHAT3WORDS** squaring.thank.sues

**PARKING** On site

**ACCESSIBILITY** ●

**W:** [www.susandugdale.com](http://www.susandugdale.com)



## 147 Dotty Earl

Creating colourful, contemporary artwork to, hopefully, brighten someone's day! Dotty works with mixed media: watercolour with pastel and coloured pencil, with a smidge of charcoal and ink pen thrown in, to give a soft and whimsical feel.

**LOCATION** Cherry Tree Cottage, Ingleby Cross, DL6 3NQ

**DIRECTIONS** On entering village crossroads with Bluebell Inn on your left, turn right.

**WHAT3WORDS** picturing.moral.shine

**PARKING** On street

**ACCESSIBILITY** ●

**W:** [www.dottyearl.co.uk](http://www.dottyearl.co.uk)



## 148 KTandthekiln

KT sculpts animal forms in clay. Her aim is to translate their movement and form into static. The imperfections of the clay reflect the imperfections in living beings. Colour and surface are abstract allowing the viewer to interpret into the familiar.

**LOCATION** 130 High Street, Swainby

**DIRECTIONS** 3rd house on right after Claver Close

**WHAT3WORDS** happy.scrubbing.portable

**PARKING** In village

**ACCESSIBILITY** ●



## 149 Alan Coates

Alan makes colourful and abstracted limited editions of etchings and woodcuts inspired by the scenery and prehistory of the North York Moors, its surroundings and the feelings and impressions they invoke.

**LOCATION** 5 Cleveland View, Faceby, TS9 7DE

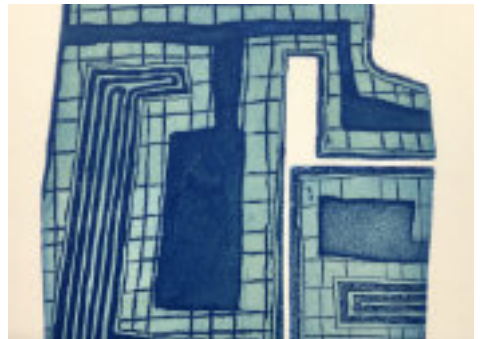
**DIRECTIONS** Follow signs to Faceby from A172. Past the Sutton Arms. With Low Farm on the corner, turn left into Cleveland View.

**WHAT3WORDS** realm.intersect.awkward

**PARKING** On street

**ACCESSIBILITY** ●

**W:** [www.instagram.com/alancoatesprints](https://www.instagram.com/alancoatesprints)



## 150 Garth Bayley

PE ❄️

Garth Bayley is inspired by capturing a moment in time. This inspiration has led to a collection of paintings from cycling and horse racing to dance, nature and portraits. Garth's work is bold in expression, colourful and full of movement.

**LOCATION** 12 Evergreen Avenue, Stokesley, TS9 5FQ

**DIRECTIONS** From roundabout leaving Stokesley, take 2nd road to left. Last house in front of you.

**WHAT3WORDS** nightfall.vibes.casually

**PARKING** On street

**ACCESSIBILITY** ●

**W:** [garthbayley.co.uk](https://www.garthbayley.co.uk)



## 151 Steve Tomlinson

PE ❄️

Steve paints to create an experience of a quiet, contemplative nature, through form, colour and composition – utilising a range of items to attain a simple grace and dignity akin to the qualities we often find in ancient murals, sculptures and earthenware.

**LOCATION** 25 Cleveland Avenue, Stokesley, TS9 5EZ

**DIRECTIONS** At Strikes roundabout, exit onto Meadowfield then Cleveland Av. LHS past Queens Dr

**WHAT3WORDS** defends.plod.could

**PARKING** On street

**ACCESSIBILITY** ●

**W:** [www.saatchiart.com/en-gb/setomlinson](https://www.saatchiart.com/en-gb/setomlinson)







## 152 Lindsey-Groves

PE ❄️

Lindsey paints flowers in isolation, celebrating small details. She finds sadness in plants fading past their prime and strives to capture their beauty before they wither, weaving elements together to honor their fleeting perfection.

**LOCATION** 9 Cleveland Ave, Stokesley, TS9 5EZ

**DIRECTIONS** At Mill pub turn right. End of road 3rd exit off roundabout. First road on right.

**WHAT3WORDS** jazz.simmer.legend

**PARKING** On street

**ACCESSIBILITY** ●

**W:** [www.lindsey-groves.com](http://www.lindsey-groves.com)



## 153 Dave Mercer

PE ❄️

Dave is an abstract landscape artist who seeks to convey the emotional impact of a particular place or moment in time. His art shows both the grandeur and the intimacy of nature. From big statement pieces to small paintings, each piece captures a different aspect of the landscape.

**LOCATION** 6 The Dorkings, Great Broughton, TS9 7NA

**DIRECTIONS** Great Broughton is on the B1257 near Stokesley. Turn off next to Wainstones Hotel.

**WHAT3WORDS** hiked.teams.aliens

**PARKING** On street

**ACCESSIBILITY** ●

**W:** [www.davemercer.art](http://www.davemercer.art)



## 154 Kate Brown

❄️

Kate is inspired by the transient nature of the seasons and natural world. She works in printmaking and painting, with her work evolving through the passing seasons as colour palettes and landscapes transform.

**LOCATION** 5 Church View, Pockley, York, YO62 7TQ

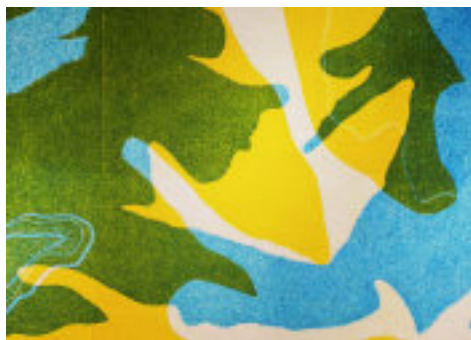
**DIRECTIONS** From Helmsley A170 East. Left onto Wykeham Dale to Pockley. 1 mile down on Right.

**WHAT3WORDS** look.roost.brick

**PARKING** On site and street

**ACCESSIBILITY** ●

**W:** [www.katebrowncreative.co.uk](http://www.katebrowncreative.co.uk)



## 155 Jessica Shaw

PE ❄️

Jessica is an artist/printmaker working with screen, woodcut, monotype and mark-making with mixed media. Exploring water, not only the enduring landmasses seen in maps, but also the ephemeral nature of ice patterns.

**LOCATION** Quarry Art Studio, Hagg Road, Kirkbymoorside, YO62 7JA

**DIRECTIONS** Up Gillamoor Rd. Left onto Hagg Rd. Over brow of hill then left.

**WHAT3WORDS** thinks.unimpeded.popped

**PARKING** On site

**ACCESSIBILITY** ●

**W:** [www.quarryartstudio.co.uk](http://www.quarryartstudio.co.uk)



## 156 Martin Gittins

PE

Martin Gittins is a landscape painter working primarily in oils. His work blends real and imagined elements of the built environment and the natural world. He is inspired by the landscape of the North York Moors and drawn to its contested relationship of the natural and the man-made.

**LOCATION** Inchcail, Main street, Gillamoor, YO62 7HX

**DIRECTIONS** On Gillamoor turn right onto Main St past Royal Oak. Penultimate house on Left.

**WHAT3WORDS** marathon.screening.galaxy

**PARKING** On street

**ACCESSIBILITY** ✓

**W:** martingittins.art



## 157 Alice O'Neill

Papercut and collage is Alice's preferred medium. During the past year however she has been experimenting with digital art and a new style, using collage as a base, is emerging...bringing her work into the technological era.

**LOCATION** Barmoor, Hutton le Hole, YO62 6UE

**DIRECTIONS** From A170 signed to Castleton, through Hutton, Left after cattle grid, marked Gillamoor. Immediately on your left.

**WHAT3WORDS** download.daily.inventors

**PARKING** On site

**ACCESSIBILITY** ✓

**W:** www.instagram.com/aliceoneill123



## 158 Slab and Slip



Sarah creates sculptural ceramics; each piece a reminder of an experience, communicated through texture, pattern and mark-making. Standing stones, beach groins, boulders, weathered rocks, moors influence her work.

**LOCATION** West Garth, 23 Castlegate, Kirkbymoorside, York, YO62 6BW

**DIRECTIONS** Kirkbymoorside top roundabout. Up Castlegate. 23 on Left hand side.

**WHAT3WORDS** braved.jogged.worms

**PARKING** On site and street

**ACCESSIBILITY** ●

**W:** www.slabandslip.co.uk



## 159 Nettle Cottage Prints



From their studio in the North York Moors, Becky and Sarah create simple, folk art linoprints. Strongly influenced by local and natural folklore and poetry, their work invites you to settle into nature and symbolism.

**LOCATION** West Garth, 23 Castlegate, Kirkbymoorside, York, YO62 6BW

**DIRECTIONS** Kirkbymoorside top roundabout. Up Castlegate. 23 on Left hand side.

**WHAT3WORDS** braved.jogged.worms

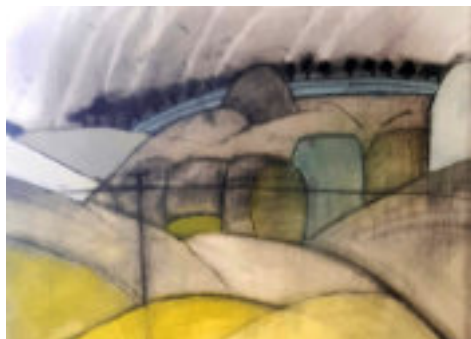
**PARKING** On site and street

**ACCESSIBILITY** ●

**W:** www.nettlecottageprints.co.uk







## 160 Sally Parkin

Sally is a painter/printmaker living and working in the North York Moors. Much of her work is informed by poetry and 20th century literature which she interprets in bold colourful images, each work telling its own story.

**LOCATION** The Moorside Rooms, 9 Church Street, Kirkbymoorside, York, YO62 6AZ

**DIRECTIONS** Approx 100 yds off Kirkbymoorside Main St on left at base of Church steps

**WHAT3WORDS** gambles.starfish.boldest

**PARKING** On street **ACCESSIBILITY** ✓

**W:** [www.facebook.com/sallyparkinart](https://www.facebook.com/sallyparkinart)



## 161 Pauline Brown

PE

Artist, art therapist and theatre designer: most of Pauline's work is done outside in nature, following the changing seasons, using layers of colour and texture to capture the moods and atmosphere of the landscape.

**LOCATION** The Moorside Rooms, 9 Church Street, Kirkbymoorside, York, YO62 6AZ

**DIRECTIONS** Approx 100 yds off Kirkbymoorside Main St on left at base of Church steps

**WHAT3WORDS** gambles.starfish.boldest

**PARKING** On street **ACCESSIBILITY** ✓

**W:** [www.paulinebrownart.com](https://www.paulinebrownart.com)



## 162 Lyn Bailey

Lyn lives and works on the edge of the North Yorkshire Moors. Her inspiration comes from vast landscapes and varied wildlife, her designs developing organically through the cutting and printing process.

**LOCATION** The Moorside Rooms, 9 Church Street, Kirkbymoorside, York, YO62 6AZ

**DIRECTIONS** Approx 100 yds off Kirkbymoorside Main St on left at base of Church steps

**WHAT3WORDS** gambles.starfish.boldest

**PARKING** On street **ACCESSIBILITY** ✓

**W:** [www.lynbailyprintmaker.com](https://www.lynbailyprintmaker.com)



## 163 Elisabeth Bailey

Elisabeth uses red clay with her designs inspired by animals and birds, painted in hot wax between layers of coloured glazes. The wax melts allowing drawings to change with the shape of the pot during firing.

**LOCATION** The Moorside Rooms, 9 Church Street, Kirkbymoorside, York, YO62 6AZ

**DIRECTIONS** Approx 100 yds off Kirkbymoorside Main St on left at base of Church steps

**WHAT3WORDS** gambles.starfish.boldest

**PARKING** On street **ACCESSIBILITY** ✓

**W:** [brigantia.co.uk/2024/10/29/elisabeth-bailey](https://brigantia.co.uk/2024/10/29/elisabeth-bailey)



## 164 Clare Belbin



Clare works outside with nature and aims to capture qualities of rhythm, light, shape and form, bringing them to the page with accuracy in translation. She strives for playfulness, fluidity and strong use of colour.

**LOCATION** The Moorside Rooms, 9 Church Street, Kirkbymoorside, York, YO62 6AZ

**DIRECTIONS** Approx 100 yds off Kirkbymoorside Main St on left at base of Church steps

**WHAT3WORDS** gambles.starfish.boldest

**PARKING** On street **ACCESSIBILITY** ✓

**W:** www.clarebelbin.com



## 165 Studio Milena

Helen weaves captivating textures with a delightful play on colour, interpreting architecture and landscapes whether rural, urban or coastal, tempting you to touch the tactile nature of her work. Helen is currently exploring plant-based dyes.

**LOCATION** Fourth Cottage, Main Street, Sinnington, YO62 6SH

**DIRECTIONS** Studio opposite Elmsall Farm

**WHAT3WORDS** freedom.should.guessing

**PARKING** On street **ACCESSIBILITY** ●

**W:** www.studiomilena.com



## 166 Kingmaker studio

Calum is a landscape artist based in North Yorkshire, England. Inspired by the natural beauty on his doorstep he uses a range of mediums to create gritty, moody pieces. Often in sepia and dark hues his work showcases trees, landscapes and mountains in their raw beauty.

**LOCATION** West Cawthorne Farm, Cawthorne Lane, Pickering, YO18 8EH

**DIRECTIONS** Follow NYOS signs

**WHAT3WORDS** quit.grounding.carbon

**PARKING** On site **ACCESSIBILITY** ✓

**W:** kingmaker-studio.com



## 167 Gillies Jones Glass



Artist Kate Jones and glassmaker Stephen Gillies live and work in the North York Moors National Park. Gillies Jones draws from the elemental beauty of their location forging a deep connection with their surroundings which in turn characterises their complex works in contemporary glass.

**LOCATION** The Old Forge, Rosedale Abbey, Pickering, YO18 8SA

**DIRECTIONS** Behind the village Church Yard

**WHAT3WORDS** surreal.blacken.preparing

**PARKING** On street **ACCESSIBILITY** ✓

**W:** gilliesjonesglass.co.uk







## 168 Stew Studio

Sarah is a landscape painter based in the North York Moors. Working outdoors in all weather, she captures fleeting shifts in light and atmosphere. Preferring watercolour for its unpredictability, she works across multiple surfaces and always carries a sketchbook.

**LOCATION** The Wood Workshop, Botton Village, Danby, YO21 2NJ

**DIRECTIONS** Follow NYOS signs

**WHAT3WORDS** wicket.rural.apples

**PARKING** On street

**ACCESSIBILITY** ●

**W:** [stewstudio.com](http://stewstudio.com)



## 169 Miria Miria

PE ❄️

Miria is a painter who explores the dynamic relationship between humans and non-humans, combining painting with assemblage and costume-design. Miria creates immersive narratives reflecting on environmental awareness, identity & interconnectedness of all beings.

**LOCATION** Redcar Contemporary Art Gallery, 13 West Terrace, Redcar, TS10 1DS

**DIRECTIONS** Between the Redcar clock and the seafront

**WHAT3WORDS** figure.shirts.rotate

**PARKING** On street or car park

**ACCESSIBILITY** ●

**W:** [miriamiriaart.godaddysites.com](http://miriamiriaart.godaddysites.com)



## 170 Jessica Leigh

PE

Jessica is an emerging artist working in Redcar. She is inspired by the effects of human impact on natural surroundings. Her work focuses on abstracting movement and feeling, utilising both traditional and experimental mediums.

**LOCATION** Redcar Contemporary Art Gallery, 13 West Terrace, Redcar, TS10 1DS

**DIRECTIONS** Between the Redcar clock and the seafront

**WHAT3WORDS** figure.shirts.rotate

**PARKING** On street or car park

**ACCESSIBILITY** ●

**W:** [jessicaleighoriginals.com](http://jessicaleighoriginals.com)



## 171 Rae Clarke

PE

Rae's paintings are full of feelings about her surroundings. Semi-abstract oils capture a sense of nostalgia from spaces where people unwind through shape, line, texture, colour and directness in materials.

**LOCATION** Studio 12, Saltburn Studios & Gallery, 30-31 Marske Rd, Saltburn, TS12 1QG

**DIRECTIONS** Opposite bus stop with wood cladding

**WHAT3WORDS** manuals.depend.acoustics

**PARKING** On street

**ACCESSIBILITY** ●

**W:** [www.instagram.com/raeclarkeart](http://www.instagram.com/raeclarkeart)



## 172 Jessica Christie



Working with casting Jesmonite, Jessica captures the North East landscape. Jessica casts pots, but also works with the material more expressively, painting layers to create landscapes, captured memories. The tactile feel & weight of the pieces are key in capturing these moments.

**LOCATION** Creation Saltburn, Victoria Hall, 6-8 Diamond Street, Saltburn by the Sea, TS12 1EB

**DIRECTIONS** Top of Diamond Street, well signed

**WHAT3WORDS** hooks.stolen.tend

**PARKING** On street **ACCESSIBILITY** ✓

**W:** [www.instagram.com/jesmonitenorth](https://www.instagram.com/jesmonitenorth)



## 173 Marna Lunt



Marna creates expressive paintings reflecting her fascination with the emotional power of colour. Exploring narratives of solitude & the search for a simpler life, Marna uses layers of wax & oil paint to build texture & structure.

**LOCATION** Creation Saltburn, Victoria Hall, 6-8 Diamond Street, Saltburn by the Sea, TS12 1EB

**DIRECTIONS** Top of Diamond Street, well signed

**WHAT3WORDS** hooks.stolen.tend

**PARKING** On street **ACCESSIBILITY** ✓

**W:** [marnaluntartist.com](https://marnaluntartist.com)



## 174 CFS Ceramics



Claude creates pots for use and enjoyment using porcelain and stoneware clays, and occasionally Raku. His inspiration is drawn from the moors and coastline. His pots are familiar domestic forms, some individual one-off pieces, that are a synthesis of traditions and styles.

**LOCATION** Unit 2 Princes Road Business Centre, Princes Road, Saltburn by the Sea. TS12 1JJ

**DIRECTIONS** Follow NYOS signs

**WHAT3WORDS** slightly.intersect.homecare

**PARKING** On street **ACCESSIBILITY** ●

**W:** [www.claudefreresmith.co.uk](https://www.claudefreresmith.co.uk)



## 175 Diane Mainzer



Diane's painting is about the environment she has chosen to live in, with a subliminal mythology. This includes paintings of landscape and seascape and the animals therein. She also explores contemporary mythology and feminism in her figure painting with a male model.

**LOCATION** Sea View, 68 High Street, Lingdale, Saltburn-by-the-sea, TS12 3EY

**DIRECTIONS** Opposite The Worship Centre

**WHAT3WORDS** episodes.ribcage.latter

**PARKING** On street **ACCESSIBILITY** ●

**W:** [www.seaviewcottagepaintingholidays.com](https://www.seaviewcottagepaintingholidays.com)







## 176 Adam Berry

PE ❄️

Berry produces instant responses to a location through his immediate sketches, paintings and artists books. In his own words Adam sums up the work as "... a different response to each individual subject or location... There is no, 'one particular style', as such".

**LOCATION** Sea View, 68 High Street, Lingdale, Saltburn-by-the-sea, TS12 3EY

**DIRECTIONS** Opposite The Worship Centre

**WHAT3WORDS** episodes.ribcage.latter

**PARKING** On street

**ACCESSIBILITY** ●

**W:** [www.seaviewcottagepaintingholidays.com](http://www.seaviewcottagepaintingholidays.com)



## 177 Emma Donoghue

PE ❄️

I love working with clay, primarily using porcelain and white stoneware. I am Interested in texture and form, using familiar and found discarded objects and fabric to create vessels, wall pieces and combining other materials.

**LOCATION** Loftus Arts, Former United Reformed Church, West Road, Loftus, TS13 4RG

**DIRECTIONS** Near traffic lights opposite the turn off to Liverton mines. Red brick building with a spire.

**WHAT3WORDS** warns.conforms.vibe

**PARKING** On street

**ACCESSIBILITY** ✓



## 178 Cath Little

PE ❄️

Cath has recently rediscovered pottery and is passionate about sharing her enthusiasm for the exciting process of creating vibrant raku ceramic studio ware.

**LOCATION** 19a Hall Grounds, Loftus, TS13 4HJ

**DIRECTIONS** Centre of Loftus

**WHAT3WORDS** fnishes.sundial.overheat

**PARKING** Nearby car park, disabled on site

**ACCESSIBILITY** ✓



## 179 Clothylde Vergnes

❄️

Clothylde's artworks are personal and stylised interpretations inspired by the landscape and nature in North Yorkshire. Her approach is contemplative, and her oil paintings are evolved from quick sketches and elaborated in layers in her studio.

**LOCATION** 38 High Street, Loftus, TS13 4HA

**DIRECTIONS** On marketplace, 8 doors to right of the Co-Op

**WHAT3WORDS** gave.scanner.structure

**PARKING** On site/marketplace

**ACCESSIBILITY** ●

**W:** [www.clothylde.com](http://www.clothylde.com)



## 180 Kit Designs



Fascinated by clay in its multitude of colours and textures, Kit is inspired by the sea and land formations. The work is sometimes functional, often sculptural but always visually exciting. The processes mean all her work is as individual as a fingerprint.

**LOCATION** Stowe Lodge, 56 Ellerby Lane, Runswick Bay, TS13 5HS

**DIRECTIONS** From A174 to Ellerby Lane, 2<sup>nd</sup> house on the left  
**WHAT3WORDS** market.evolution.presuming

**PARKING** On street

**ACCESSIBILITY** ●

**W:** kit-designs.co.uk



## 181 Ian Burke



Ian is a painter printmaker who moves back and forwards between oil painting and relief print making. One discipline informs the other in terms of the imagery and ideas.

**LOCATION** Stonegate Mill, Stonegate, Lealholm, YO21 2AB

**DIRECTIONS** 500m downhill from Stonegate hamlet

**WHAT3WORDS** congratulations.elbowing.ignoring

**PARKING** On street

**ACCESSIBILITY** ●

**W:** www.ianburkepainterprintmaker.com



## 182 Magick and Wilds



Anna is a textile and mixed media artist who has worked making puppets and costumes for the last 2 decades. Anna's artwork merges the natural world with the realms of imagination and fairytales. She creates characters and pieces from fibres, fabrics and reclaimed objects.

**LOCATION** Kittergreen Farm, Hutton Mulgrave, Whitby, YO21 3SF

**DIRECTIONS** Small farm house on Kitter Lane

**WHAT3WORDS** sounds.recital.quietest

**PARKING** On site

**ACCESSIBILITY** ✓

**W:** nurturingrituals.co.uk/art-gallery



## 183 Emma Evett

Like many artists in this area, Emma draws inspiration from the land and seascape around her home. Working in glass she fuses and casts the material into sculptures, decorative pieces and functional ware, many featuring animals, seedheads or the surrounding landscape.

**LOCATION** Manor Farm Cottage, Newholm, Whitby, YO21 3QY

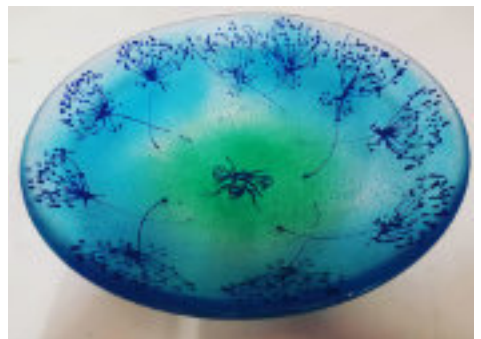
**DIRECTIONS** From A174 4<sup>th</sup> house on right after Beehive Inn

**WHAT3WORDS** playback.admire.slippers

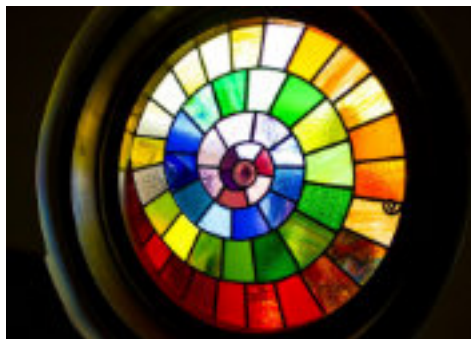
**PARKING** On street

**ACCESSIBILITY** ●

**W:** www.emmaevettglass.com







## 184 Janet Fraser

Janet is inspired by her surroundings living in the idyllic village of Sleights. She loves creating modern bespoke windows and designing garden pieces. Janet also works with copper foil technique to make smaller works. She runs workshops in both mediums from her garden studio.

**LOCATION** 7 Whin Green, Sleights, Whitby, YO22 5AB

**DIRECTIONS** Turn into Whin Green, 4th house on the left.

**WHAT3WORDS** missions.wrist.trial

**PARKING** Nearby car park

**ACCESSIBILITY** ●

**W:** janet-fraser-stained-glass.co.uk



## 185 Ailsa Nicholson



Ailsa is a fused glass and ceramic artist with a great passion for light, shape and texture. The beauty of the Whitby area is reflected in her creativity, capturing nature, land and seascapes in bold, abstract and tactile forms.

**LOCATION** 24 Iburndale Lane, Sleights, Whitby, YO22 5DP

**DIRECTIONS** Look for gallery sign at the bottom of the drive

**WHAT3WORDS** fleet.ultra.gladiator

**PARKING** On street

**ACCESSIBILITY** ●

**W:** ailsanicholson.weebly.com



## 186 Jean Cunion

Jean's ceramics are inspired by the bird life of the North Yorkshire countryside, moors and coast and her Ugglebarnby garden.

**LOCATION** Low Farm, Ugglebarnby, Whitby, YO22 5HX

**DIRECTIONS** From the A169 take the Ugglebarnby turn at Sleights church. From B1416 take the road signed to Sleights

**WHAT3WORDS** seating.screeches.ferrets

**PARKING** On site

**ACCESSIBILITY** ●



## 187 Anj Bone

PE

Angela's paintings aim to capture the transience, vulnerability and fragility in the natural world. Spaces, shadows, light and patterning are all elements she explores in her process.

**LOCATION** Dale Farm, Stainsacre, Whitby, YO22 4LR

**DIRECTIONS** Take Stainsacre Lane from Stainsacre towards Sneatonthorpe, after ¼ mile take track on right leading to Dale Farm

**WHAT3WORDS** reporting.digital.racked

**PARKING** On site

**ACCESSIBILITY** ●

**W:** www.anjbone.art



## 188 Sue Willmington

Sue has gone back to exploring oils, staging a show in each work.

**LOCATION** Red Barn, Littlebeck Bank, Nr Ugglebarnby, YO22 5HY

**DIRECTIONS** Long old farmhouse on the left on Littlebeck bank 1.5 miles from A1461

**WHAT3WORDS** strutted.caravan.cakewalk

**PARKING** On site **ACCESSIBILITY** ●

**W:** www.suewillmington.co.uk



## 189 Maria Bennett



Maria is a contemporary landscape artist, her work is greatly inspired by the rugged stormy hills of the North Yorkshire Moors and towards the coast. In recent years has mainly painted rich textured paintings in oil and wax.

**LOCATION** Eskdaleside Barn, Eskdaleside, Grosmont, YO22 5PS

**DIRECTIONS** Enter Grosmont from Sleights via Eskdaleside. It is the first barn on the left hand side

**WHAT3WORDS** husky.themes.logbook

**PARKING** On site **ACCESSIBILITY** ●

**W:** www.mariabennett.co.uk



## 190 Louise Garrett



Louise draws and paints from life, using a variety of materials. Her interest in observation is paramount but she also enjoys happy accidents and frequently reworks her paint surfaces in an attempt to create a lively and interesting picture.

**LOCATION** Dale End Farm, Green End, Goathland, Whitby YO22 5LJ

**DIRECTIONS** A169, then Beck Hole Road and follow signs

**WHAT3WORDS** wove.interacts.king

**PARKING** On site **ACCESSIBILITY** ●

**W:** www.louisegarrettart.com



## 191 Michael Atkin



Michael creates limited edition etchings, wood engravings, lino prints and fine art books in his home-based studio, using traditional methods with five antique printing presses from the 19th century. Each image has its own story.

**LOCATION** Byways, Low Street, Scalby, Scarborough, YO13 0QW

**DIRECTIONS** Follow NYOS signs

**WHAT3WORDS** winks.trials.sports

**PARKING** On street **ACCESSIBILITY** ✓

**W:** www.michaelatkin.co.uk







## 192 Katie Braid

PE ❄️

Katie makes sculptural vessels and forms for both home and garden using a variety of hand building techniques. Taking inspiration from the surrounding environment she creates work that invites interaction.

**LOCATION** Unit 28 Manor Road Business Park,  
Manor Road, Scarborough, YO12 7RY

**DIRECTIONS** From front gates of business park continue to end and turn left. Further along on the left.

**WHAT3WORDS** sleep.woven.body

**PARKING** On site

**ACCESSIBILITY** ●

**W:** [www.katiebraid.com](http://www.katiebraid.com)



## 193 Gladstone Studio

PE ❄️

Adam has been painting, exhibiting and running a studio for the last 30 years. His work encompasses the use of a broad range of medium, techniques and processes. He responds to the world around him, its people, characters and environment. Adam's work is vibrant, confident and engaging.

**LOCATION** 2-4 Gladstone Lane, Scarborough, YO12 7BP

**DIRECTIONS** Off Gladstone Road and first building on left

**WHAT3WORDS** soccer.dared.axed

**PARKING** On site (disc)

**ACCESSIBILITY** ✓

**W:** [www.adamkingartist.com](http://www.adamkingartist.com)



## 194 Janine Baldwin

❄️

With a strong focus on mark-making and texture, Janine uses pastels, paint and collage to create her work inspired by the Yorkshire landscape. Her influences include Cy Twombly and Abstract Expressionism. Janine is a conservation volunteer with the North York Moors and this enriches the artwork she creates.

**LOCATION** 19 Gladstone Road, Scarborough, YO12 7BQ

**DIRECTIONS** Opposite the Beyond Housing building

**WHAT3WORDS** manual.impose.riches

**PARKING** On street

**ACCESSIBILITY** ●

**W:** [www.janinebaldwin.com](http://www.janinebaldwin.com)



## 195 Lucy Somper

PE ❄️

Working with Indian ink and watercolours – ideal for capturing scenes on the go – Lucy's work ranges from vibrant, interpretations to detailed illustrations. Seeking a playful, evocative approach, reflecting the dynamic nature of the landscape.

**LOCATION** Gallery 33, 33 Newborough, Scarborough,  
YO11 1NF

**DIRECTIONS** Well-signed, white storefront.

**WHAT3WORDS** began.oppose.wiser

**PARKING** On street or car park

**ACCESSIBILITY** ✓

**W:** [www.instagram.com/lassodesigns](https://www.instagram.com/lassodesigns)



## 196 Lisa Skelton

PE ❄️

Textile artist and dog lover, Lisa combines both passions to offer a unique product: a beautifully designed and finely crafted portrait of your dog. Using appliqué and embroidery techniques, Lisa strives to capture the unique character and appearance of your faithful friend.

**LOCATION** Gallery 33, 33 Newborough, Scarborough,  
YO11 1NF

**DIRECTIONS** Well-signed, white storefront.

**WHAT3WORDS** began.oppose.wiser

**PARKING** On street or car park **ACCESSIBILITY** ✓

**W:** [www.skeltonharrisdesign.co.uk](http://www.skeltonharrisdesign.co.uk)



## 197 Kimberli Werner

❄️

Working in a variety of mixed media, Kimberli's intuitive painting technique focuses on spontaneous creativity and not being tied to any one particular outcome. Her many-layered paintings emerge as bursts of spirited energy and colour.

**LOCATION** Gallery 33, 33 Newborough, Scarborough,  
YO11 1NF

**DIRECTIONS** Well-signed, white storefront.

**WHAT3WORDS** began.oppose.wiser

**PARKING** On street or car park **ACCESSIBILITY** ✓

**W:** [www.kimberliwerner.com](http://www.kimberliwerner.com)



## 198 Lindsey Tyson

❄️

Lindsey is an award-winning mixed-media abstract artist whose work is inspired by her surroundings – from mundane road markings to moody landscapes. Her work explores the interplay of elements and textures, pushing the boundaries of multimedia.

**LOCATION** Woodend, The Crescent, Scarborough,  
YO11 2PW

**DIRECTIONS** Last villa next to Scarborough Art Gallery

**WHAT3WORDS** bridge.issue.fields

**PARKING** On street **ACCESSIBILITY** ✓

**W:** [www.lindseytyson.art](http://www.lindseytyson.art)



## 199 Matt Machouki

PE ❄️

Matt makes large, coiled and turned stoneware pots inspired by natural, industrial, architectural, and geometric forms. Sometimes these are made in sections and stitched together with rope or wire. Subtle variations in colour and texture are provided by the clay itself.

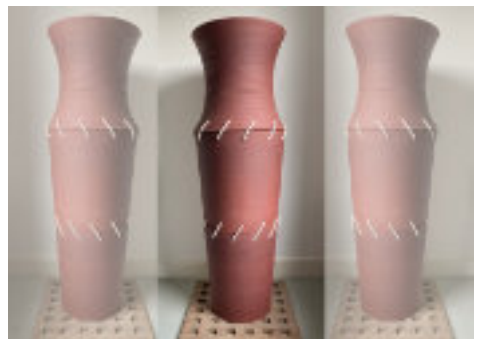
**LOCATION** Beeforth's Hive, Esplanade, Scarborough,  
YO11 2BA

**DIRECTIONS** Behind the Rose Garden in South Cliff Gardens

**WHAT3WORDS** panels.fled.slate

**PARKING** On the Esplanade (disc) **ACCESSIBILITY** ✓

**W:** [www.instagram.com/mattmachouki](https://www.instagram.com/mattmachouki)







## 200 Louise Bass



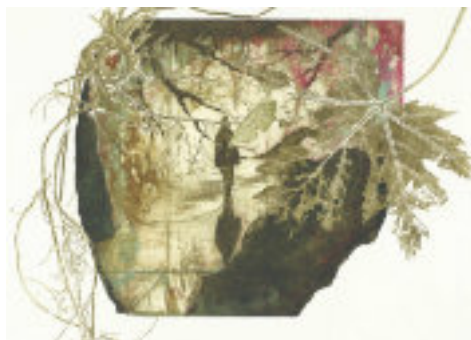
Inspired by the seaside, Lou's paintings are vibrant, fresh and folksy. With deceptively simple storytelling she explores relationships and situations using a medley of characters including Donkey, Crow, Angry Man and Bandit Cat.

**LOCATION** Beeforth's Hive, Esplanade, Scarborough, YO11 2BA

**DIRECTIONS** Behind the Rose Garden in South Cliff Gardens  
**WHAT3WORDS** panels.fled.slate

**PARKING** On the Esplanade (disc) **ACCESSIBILITY** ✓

**W:** [www.instagram.com/louise.bass3](http://www.instagram.com/louise.bass3)



## 201 Wendy Tate



Wendy uses nature and the figure as a pictorial language to address the dislocation often felt during transitional times in life. She works predominantly in print-making and painting, often influenced by her rural surroundings.

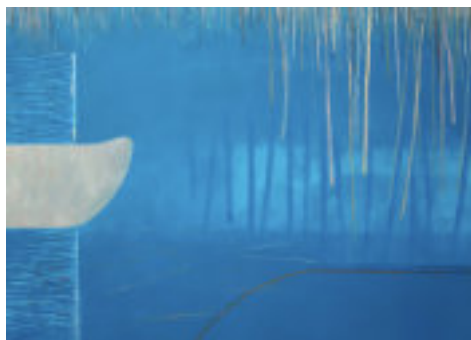
**LOCATION** Jersey Barn, 51 Main Street, Irton, Scarborough, YO12 4RJ

**DIRECTIONS** Set back through a gate

**WHAT3WORDS** crown.slanting.bristle

**PARKING** On Road **ACCESSIBILITY** ●

**W:** [www.wendytateartist.co.uk](http://www.wendytateartist.co.uk)



## 202 Rob Moore

Rob is a painter and printmaker whose practice extends over a lifetime. His work is abstract but holds many recognisable references. It is highly crafted and suffused with carefully mixed colour, intriguing surfaces and dexterous brushwork in which contemporary narratives often feature in the work.

**LOCATION** Jersey Barn, 51 Main Street, Irton, Scarborough, YO12 4RJ

**DIRECTIONS** Set back through a gate

**WHAT3WORDS** crown.slanting.bristle

**PARKING** On Road **ACCESSIBILITY** ●



## 203 Shirley Vauvelle



Nature fascinates Shirley, the power, vulnerability, lines, structures and colour, hidden or revealed. Her work moves between hand building sculptures in stoneware and porcelain to painting with mixed media and oil.

**LOCATION** Lebberston Hall, Manor View Road, Lebberston, YO11 3PB

**DIRECTIONS** On corner of bend with wooden gates

**WHAT3WORDS** drama.diamond.affirming

**PARKING** On site and street **ACCESSIBILITY** ●

**W:** [shirleyvauvelle.com](http://shirleyvauvelle.com)



## 204 Gillian Martin



Gillian is an accomplished illustrator. In addition to her mid-century inspired prints, she will be showcasing her new abstract paintings. Influenced by modernism and post war abstraction, she aims to create a balance between line, shape and colour.

**LOCATION** Lebberston Hall, Manor View Road,  
Lebberston, YO11 3PB

**DIRECTIONS** On corner of bend with wooden gates

**WHAT3WORDS** drama.diamond.affirming

**PARKING** On site and street **ACCESSIBILITY** ●

**W:** [www.gillianmartinillustration.weebly.com](http://www.gillianmartinillustration.weebly.com)



## 205 Jane Took

Jane lives and works in Filey on the beautiful Yorkshire Coast. A self-taught artist, working predominantly in oil, she has found her own distinct style with a vibrancy of colour and attention to detail which is often referred to as being photographic.

**LOCATION** 19 Fir Tree Drive, Filey, YO14 9HQ

**DIRECTIONS** Approx 300m from the Roundabout

**WHAT3WORDS** another.retrieves.inert

**PARKING** On street **ACCESSIBILITY** ●

**W:** [www.janetookart.co.uk](http://www.janetookart.co.uk)



## 206 Julie Kelly



Julie creates hand-quilted wall hangings, abstract watercolours which include stitch work and mixed media collages all inspired by the Yorkshire coast. Salvaged and re-purposing materials is at the heart of Julie's work.

**LOCATION** 11 Bardney Road, Hunmanby, YO14 0LX

**Winter** – Room 10, Filey Evron Centre,  
1a John Street, Filey YO14 9DW

**DIRECTIONS** Follow NYOS signs

**WHAT3WORDS (SUMMER)** dazzling.thousands.magic

**PARKING** On street **ACCESSIBILITY** ●

**W:** [www.instagram.com/julie.kelly.artist](http://www.instagram.com/julie.kelly.artist)



## 207 Peter Finch

Peter's work exhibits a continuing struggle between the freedom of intuitive mark-making and the need to analyse. Each painting represents a mirror which reflects an aspect of his emotional response to life and nature. The goal is always to retain a sense of freedom and energy.

**LOCATION** 18 South Crescent Avenue, Filey

**DIRECTIONS** Follow NYOS signs

**WHAT3WORDS** beards.funny.replenish

**PARKING** On site and street **ACCESSIBILITY** ●

**W:** [www.peterfinchart.com](http://www.peterfinchart.com)







## 208 Lynne Glazzard

Lynne works with jewellery, enamels, painting and print making. Her work is inspired by the texture and colours of the landscape.

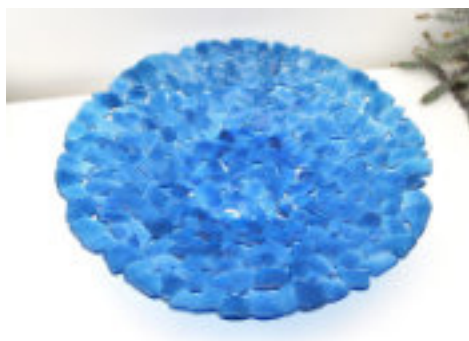
**LOCATION** 32 Northgate, Hunmanby, Filey, YO14 0NT

**DIRECTIONS** On the right side of Northgate just after the bend

**WHAT3WORDS** slide.performed.wimp

**PARKING** On site

**ACCESSIBILITY** ●



## 209 Tanja Entwistle

Tanja aims to create work that is beautiful, contemporary and intimate, using organic elements to connect us back to the natural world. For her, glass is all about transformation, and is a metaphor for the healing power that nature can have on our lives physically, psychologically and spiritually.

**LOCATION** 11 Bardney Road, Hunmanby, YO14 0LX

**DIRECTIONS** Follow NYOS signs

**WHAT3WORDS** monkey.dockers.collect

**PARKING** On street

**ACCESSIBILITY** ●

**W:** [www.tanjaentwistleglass.co.uk](http://www.tanjaentwistleglass.co.uk)

**APPLICATIONS FOR  
NYOS 2026  
WILL BE OPEN FROM  
1 SEPTEMBER UNTIL  
30 SEPTEMBER.**

**KEEP AN EYE ON  
OUR WEBSITE FOR  
FURTHER DETAILS.**



[info@nyos.org.uk](mailto:info@nyos.org.uk)

[www.nyos.org.uk](http://www.nyos.org.uk)

© NY\_open\_studios

NorthYorkshireOpenStudios





*See why the  
Worlds **LEADING**  
**ARTISTS** use  
our **BRUSHES***

01535 632666  
www.rosemaryandco.com

*Rosemary & Co*

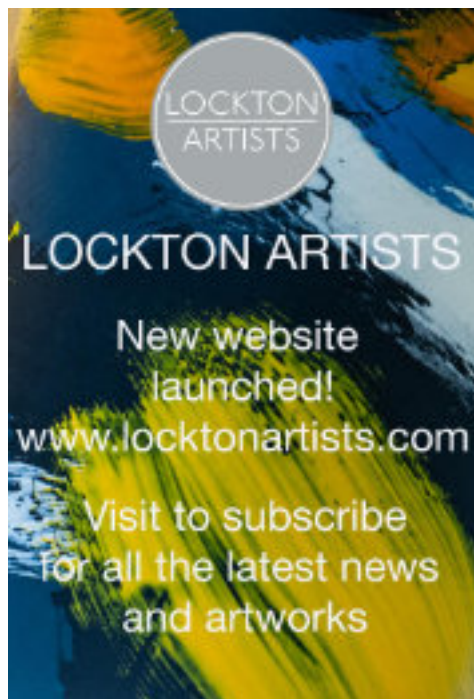


  
AMPLEFORTH  
ABBAY

- Abbey Church • Visitor Centre • Retreat Centre • Orchard
- Tea Room • Gift Shop • Grounds

ampleforthabbey.org.uk





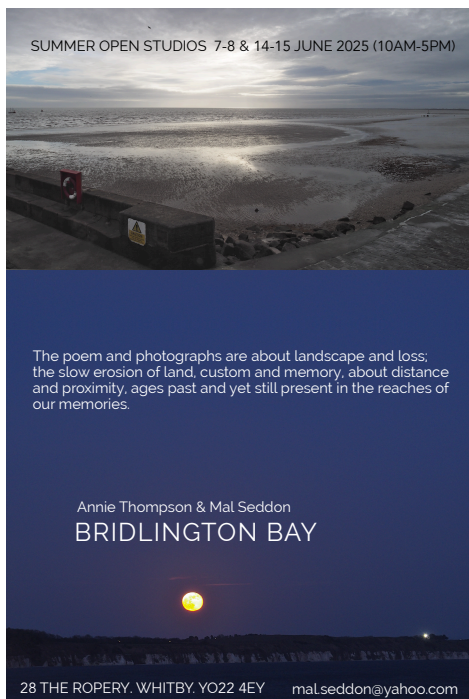
LOCKTON ARTISTS

LOCKTON ARTISTS

New website  
launched!

[www.locktonartists.com](http://www.locktonartists.com)

Visit to subscribe  
for all the latest news  
and artworks



SUMMER OPEN STUDIOS 7-8 & 14-15 JUNE 2025 (10AM-5PM)

The poem and photographs are about landscape and loss;  
the slow erosion of land, custom and memory, about distance  
and proximity, ages past and yet still present in the reaches of  
our memories.

Annie Thompson & Mal Seddon  
BRIDLINGTON BAY

28 THE ROPERY, WHITBY, YO22 4EY [mal.seddon@yahoo.com](mailto:mal.seddon@yahoo.com)



**Join us at the**

Inspired by...

gallery

**for a year of  
exhibitions,  
workshops  
and events**



SCAN QR FOR  
WHAT'S ON...

[northyorkmoors.org.uk/events](http://northyorkmoors.org.uk/events)



# THE DESTINATION FOR ART AND CULTURE

## Aesthetica

THE ART & CULTURE MAGAZINE  
www.aestheticamagazine.com

Issue 122  
December / January 2025

**IDEATION TO REALITY**  
Thomas Heatherwick discusses  
designing and making in detail

**WORLDS FROM PAPER**  
Building illusory rooms out of  
cut-out cardboard geometries

**BEYOND LANDSCAPES**  
Photographers are finding new  
ways to document open spaces

**PATHS TO ABSTRACTION**  
The darkroom offers a return to the  
real amidst post-production and AI



Be inspired by the International  
Art Magazine from York



DOWNLOAD & ENJOY  
YOUR FREE ISSUE



# **WHILST VISITING STUDIOS**

**North Yorkshire Open Studios often takes you off the beaten track and you will inevitably experience breathtaking views and memorable places during your visit. Here are just a few of the sights you can expect to see around the NYOS areas.**





## DALES

Steam trains at Embsay, Settle and Wensleydale

St Michael and All Angels 12th-Century church and falls at Linton

Yorkshire's three peaks Ribbleshead Viaduct

Buttertubs Pass

Traditional field barns in Swaledale and Littondale

Wild flower meadows around Muker

The magnificent Malham Cove and Gordale Scar



## CENTRAL

Brimham Rocks

Fountains Abbey and Studley Royal

Jervaulx Abbey

The Himalayan Gardens and Sculpture Park

Harrogate's Valley Gardens and Stray


Ancient walkways and cobbled alleys in Knaresborough

Views over Wharfe Valley

The William Morris east window at St Mary's Church in Nun Monkton

The quaint toll bridge over the River Ouse at Aldwark (40p to cross)

The historic City of York, including City walls, York Minster, and Clifford's tower



## MOORS & COAST

The White Horse at Kilburn

Benedictine Monastery at Ampleforth

Rievaulx Abbey and Terrace

The Hole of Horcum

Steam trains between Pickering and Grosmont

St Martin-on-the-Hill church at Scarborough

Whitby Abbey

North Yorkshire coastal paths between Filey and Staithes



# ARTIST BY MEDIUM...

## PAINTING AND DRAWING

- 1 Sue Strange
- 2 Nicole Dickinson
- 4 David AP Thomas
- 6 Lisa Metcalfe
- 9 Mary Waterfall
- 11 Cum-bye arts
- 13 Julie Bruce
- 21 Robert Keep
- 22 Katharine Holmes
- 26 Frank Gordon
- 28 Annie Farrer
- 29 Tony Roberts
- 30 Terry Hird
- 32 Penny Hunt
- 34 Kitty North
- 36 Rachel Morrell
- 37 Julie Edwardson
- 38 Jane Ellis
- 40 Martin Lever
- 42 Julia Noble
- 44 Jaci Stroud
- 47 Malcolm Barker
- 48 Moray Welsh
- 49 Karen Marshall
- 50 Fiona Land
- 51 Jo Garlick
- 56 Sue Sheard
- 57 Liz Harvey
- 59 Andrea Mosey
- 63 Shirley Hudson
- 64 Steph Hayes
- 67 Caroline Machray
- 70 Frances Tabernor
- 71 Jennifer Calder
- 72 Jim Sykes
- 74 Balbinder Broadbent
- 77 Elena Putley
- 78 Andrew Stratford
- 80 Fiona Odle
- 81 Clare Maria Wood
- 83 Elise Bikker
- 88 Alex Ash

- 89 Dee Thwaite
- 93 Karen Winship
- 95 Di Gomery
- 101 Mo Nisbet
- 102 Robin Grover-Jacques
- 107 Rae George
- 109 Lisa Power
- 111 Katrina Mansfield
- 117 Gonzalo Blanco
- 118 Gina Bean
- 119 Jeff Parker
- 121 Freya Horsley
- 122 Richard Gray
- 123 Graham Jones
- 124 Studio58
- 126 Andrew Bloodworth
- 131 Sarah Sharpe
- 134 Christine Hughes
- 135 Ione Harrison
- 137 Deborah Wilkinson
- 140 Jonathan Pomroy
- 141 Stephen Bird
- 146 Susan Dugdale
- 147 Dotty Earl
- 150 Garth Bayley
- 151 Steve Tomlinson
- 152 Lindsey-Groves
- 153 Dave Mercer
- 156 Martin Gittins
- 160 Sally Parkin
- 161 Pauline Brown
- 164 Clare Belbin
- 166 Kingmaker studio
- 168 Stew Studio
- 169 Miria Miria
- 170 Jessica Leigh
- 171 Rae Clarke
- 173 Marna Lunt
- 175 Diane Mainzer
- 179 Clothilde Vergnes
- 181 Ian Burke
- 187 Anj Bone
- 189 Maria Bennett
- 190 Louise Garrett

- 193 Gladstone Studio
- 194 Janine Baldwin
- 195 Lucy Somper
- 197 Kimberli Werner
- 198 Lindsey Tyson
- 200 Louise Bass
- 202 Rob Moore
- 204 Gillian Martin
- 205 Jane Took
- 207 Peter Finch

## PRINTMAKING

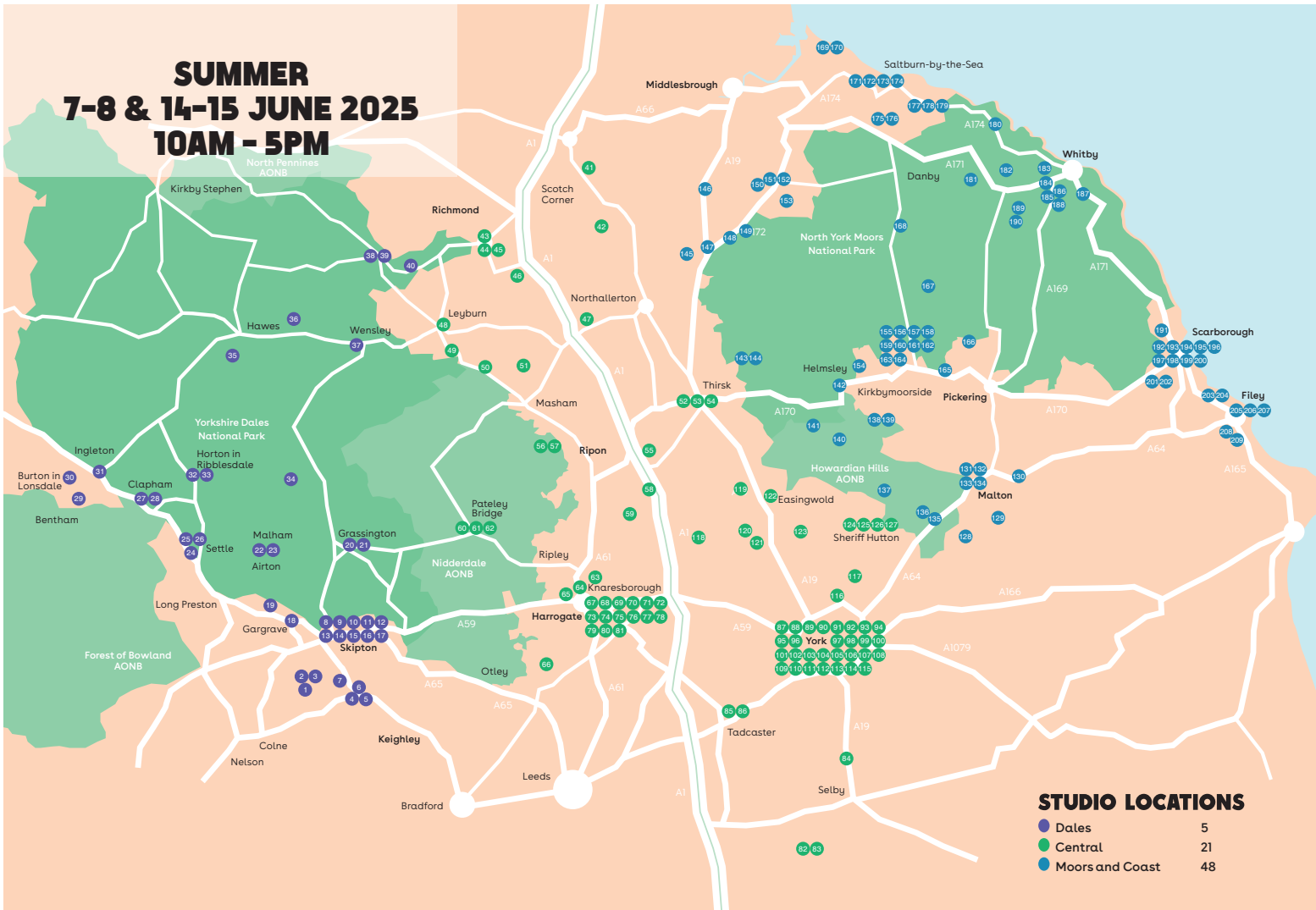
- 3 Keith Dickinson
- 23 Fiona Armer
- 33 Hester Cox
- 35 Hannah Scully
- 67 Caroline Machray
- 75 Sandra Storey
- 76 Mark Elvins
- 88 Yvonne Hoggarth
- 110 Lesley Shaw
- 113 Drawne Up
- 149 Alan Coates
- 154 Kate Brown
- 155 Jessica Shaw
- 159 Nettle Cottage Prints
- 160 Sally Parkin
- 162 Lyn Bailey
- 191 Michael Atkin
- 201 Wendy Tate

## APPLIED ART AND DESIGN

- 66 Braythorne Baskets
- 69 Harrogate College
- 128 Yorkshire Willow Baskets
- 176 Adam Berry
- 188 Sue Willmington
- 208 Lynne Glazzard



# SUMMER 7-8 & 14-15 JUNE 2025 10AM - 5PM





# WINTER 1-2 NOVEMBER 2025 11AM - 4PM





# ...ARTIST BY MEDIUM

## CERAMICS

- 5 Anna Lambert
- 18 Allison Wiffen
- 25 IMS Ceramics
- 46 Carol Metcalfe
- 52 Richard Burnley
- 54 Paul Laycock
- 55 Joseph Ludkin
- 65 Smitton Ceramics
- 114 Sam Jones
- 116 Schiewe Ceramics
- 136 Nightingales Pottery
- 138 Pamela Thorby
- 143 Ruth King
- 148 KTandthekiln
- 158 Slab and Slip
- 163 Elisabeth Bailey
- 174 CFS Ceramics
- 177 Emma Donoghue
- 178 Cath Little
- 180 Kit Designs
- 186 Jean Cunion
- 192 Katie Braida
- 199 Matt Machouki

## JEWELLERY

- 27 Christine Horsewill
- 43 The Wonky Jewellery Company
- 45 Goosewing Studios
- 60 Gowan Jewellers
- 61 Alice Clarke
- 82 Karen J Ward
- 84 Helen Drye
- 97 Jacqueline Warrington
- 98 Constance Isobel
- 112 Evie Leach
- 139 Louise Dwyer

## FURNITURE

- 144 Marcus Jacka

## GLASS

- 41 The Mosaic Room
- 167 Gillies Jones Glass
- 183 Emma Evett
- 184 Janet Fraser
- 185 Ailsa Nicholson
- 209 Tanja Entwistle

## MIXED MEDIA

- 10 Jane Carlisle Bellerby
- 15 Peter Wilkin
- 16 Carolyn Hird-Rogers
- 17 John Sherwood
- 20 Valerie Emmerson
- 24 Rakein Studio
- 31 Brian Hindmarch
- 53 Jane Burnley
- 62 Gill Kirk
- 68 Andrew Moodie
- 73 Mel Lisney
- 79 Sherry Doyal
- 86 Beth Elsdon
- 87 Emma James
- 90 Veronica Ongaro
- 91 Rachel Jones
- 92 Laura Duval
- 94 Donna Maria Taylor
- 99 Jill Tattersall
- 100 Adele Karmazyn
- 104 Rob Burton
- 105 Jo Walton
- 106 Ric Liptrot
- 120 jdeC
- 129 Boo Barwick-Ward
- 142 Millie McCallum
- 157 Alice O'Neill
- 172 Jessica Christie
- 203 Shirley Vauvelle
- 206 Julie Kelly

## SCULPTURE

- 14 Mark Butler
- 39 Graculus Sculptures
- 58 Johnny Sunter
- 115 Greenthwaite Sculptor
- 127 Steve Page
- 130 Jo Naden
- 132 Piers Edsall
- 134 Christine Hughes

## TEXTILES

- 7 Gilly Craven
- 8 Ellie Taylor
- 12 Joan Murray
- 19 Judy Metcalfe
- 96 Caroline Utterson
- 103 Fran Brammer
- 108 Lu Mason
- 125 Justine Warner
- 133 Alison Spaven
- 145 Fiona Robertson
- 165 Studio Milena
- 182 Magick and Wilds
- 196 Lisa Skelton

Back Cover - Images of artists in their studios (Left to Right, Top to bottom):

- 129 Boo Barwick-Ward
- 106 Ric Liptrot
- 127 Steve Page
- 89 Dee Thwaite
- 60 Gowan Jewellers
- 202 Rob Moore



